

Washington State

Department of Agriculture

Waste Pesticide Program



WASHINGTON STATE
DEPARTMENT OF
AGRICULTURE



WASHINGTON STATE
**DEPARTMENT OF
AGRICULTURE**

Pesticide Stewardship:

Pesticide Disposal Trends



Purpose of Program



Reduce the amount of unusable pesticides in storage.



Provide education and technical assistance to improve pesticide stewardship.

Why we started program!



DANGER

THIS SITE IS USED FOR THE DISPOSAL OF
EXTREMELY HARMFUL PESTICIDES AND CONTAINERS

Please

for the safety
of you and your family

DO NOT SALVAGE

from this area

Grant County Health District

PELIGRO
VENENO
NO TOME NADA





**Why we continue
with the program**

What is a Waste Pesticide?



Pesticide that cannot be used due to



Canceled or suspended



Product deterioration



Label deterioration



Ingredients not identifiable



Not in original container



A pesticide you do not want to use

Canceled Product



Did not want – still legal

Unlabeled containers

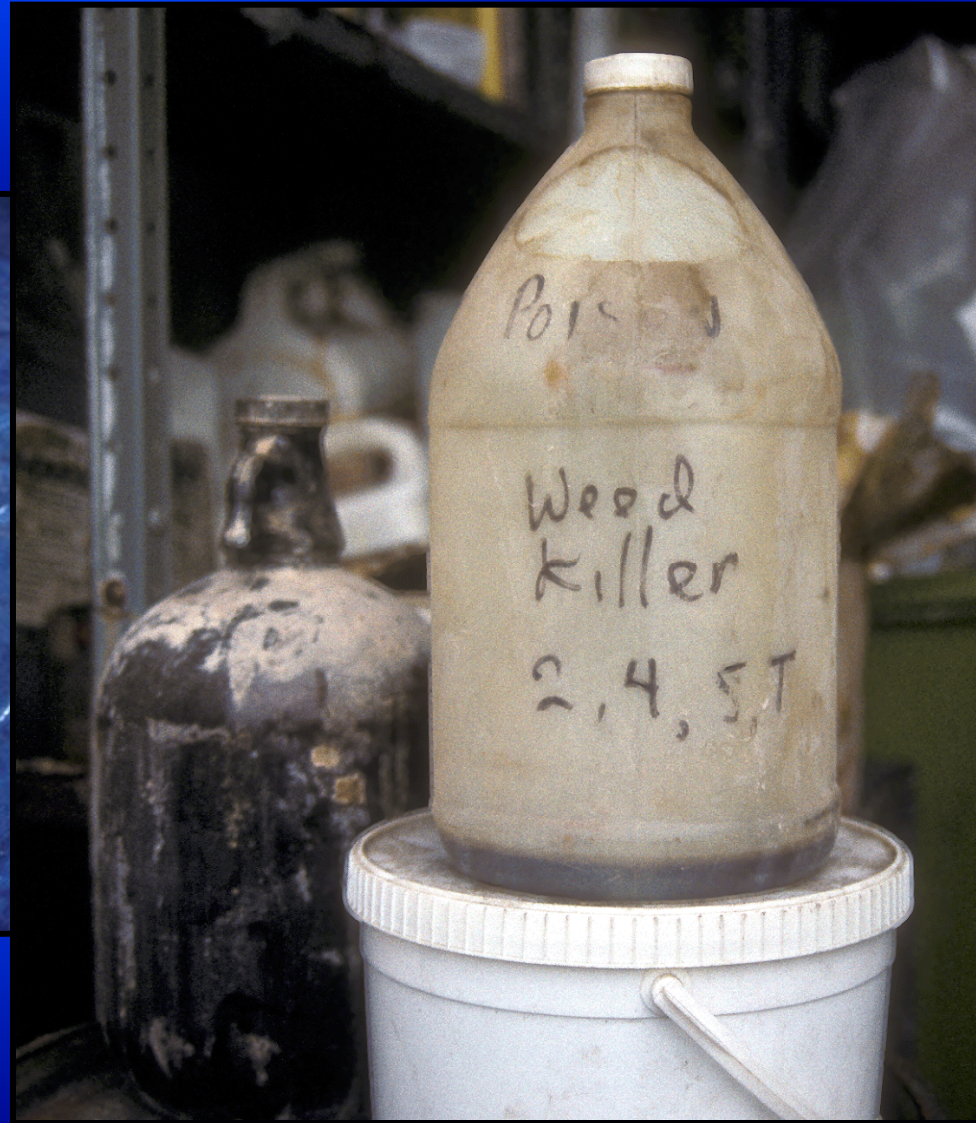
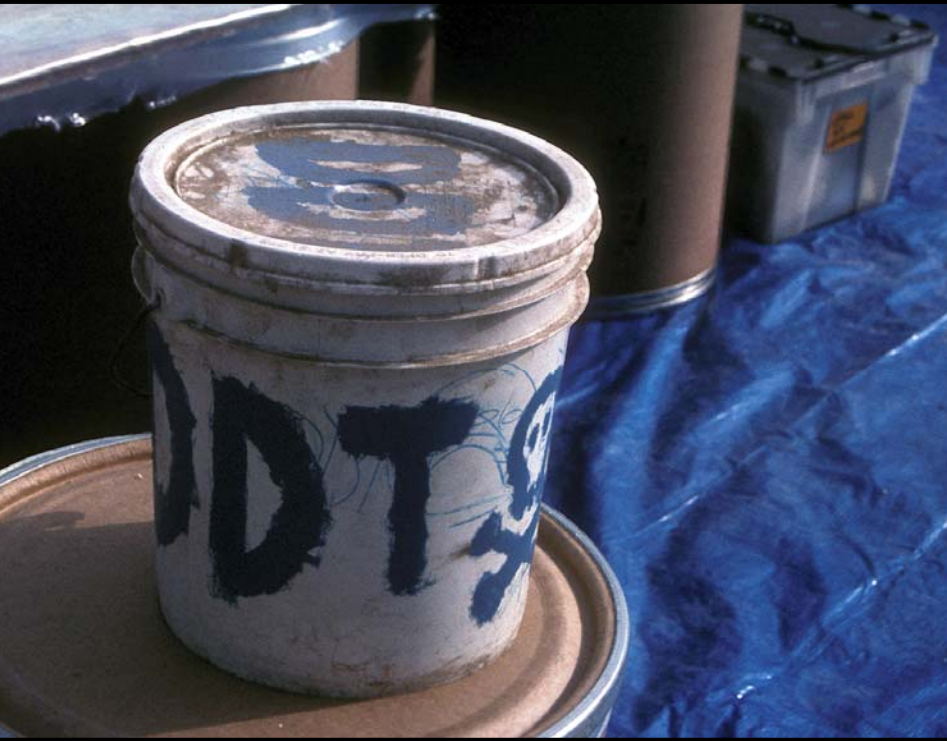


Container deteriorating

Label deteriorating



not in original container



Small Collection



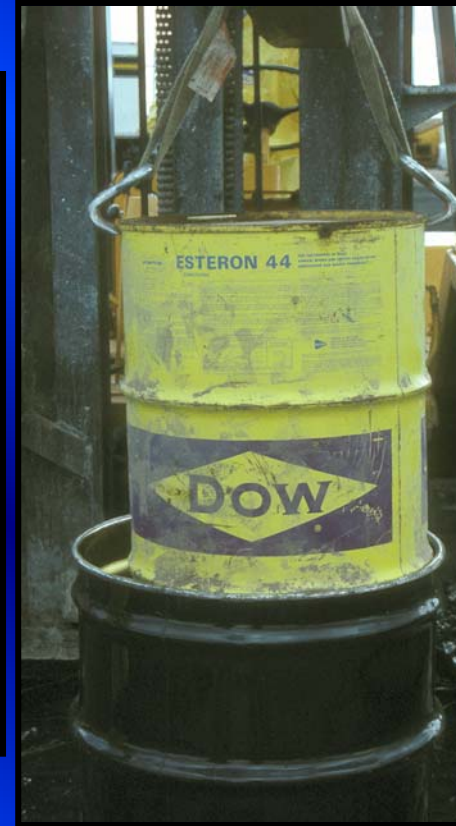
Large Collection

Customer-Site Collection









History of Program



As of February 2009



6,404 customers



240 events

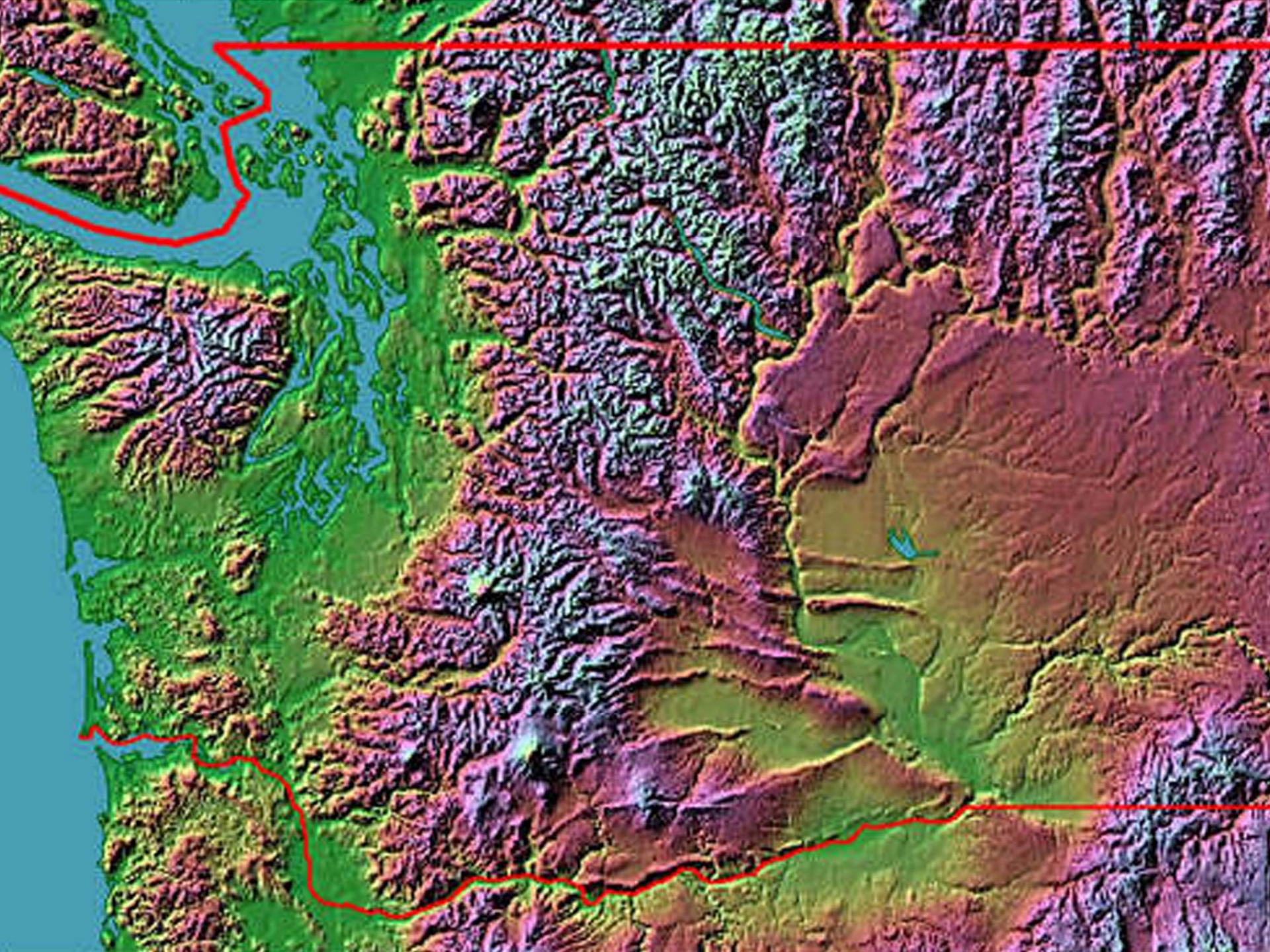


2,174,752 pounds collected



340 pounds per customer





2,174,752 pounds of products collected

- ❖ 1,130 Active Ingredients
- ❖ Nearly 2,000 combinations
- ❖ Fifteen Active Ingredients represent nearly 40% of total weight

The Top Five Waste Pesticides

| | | |
|------------------|-------------|---------|
| 1. Haz-wst (nos) | 130,421 lbs | -- 6.0% |
| 2. 2,4-D | 82,846 | -- 3.8% |
| 3. Dinoseb | 73,307 | -- 3.4% |
| 4. Sulfur | 68,309 | -- 3.1% |
| 5. DDT | 64,254 | -- 3.0% |

The Second Five Waste Pesticides

| | | | | |
|-----|-------------------|--------|----|------|
| 6. | Malathion | 54,447 | -- | 2.5% |
| 7. | Petroleum Oil | 50,521 | -- | 2.3% |
| 8. | Parathion | 40,192 | -- | 1.8% |
| 9. | Captan | 39,814 | -- | 1.8% |
| 10. | Pentachlorophenol | 34,589 | -- | 1.6% |

The Third Five Waste Pesticides

| | | | |
|-------------------------|--------|----|------|
| 11. Endrin | 34,077 | -- | 1.6% |
| 12. Calcium Polysulfide | 32,283 | -- | 1.5% |
| 13. Diazinon | 26,717 | -- | 1.2% |
| 14. Chlorpyrifos | 24,077 | -- | 1.1% |
| 15. Carbaryl | 22,239 | -- | 1.0% |



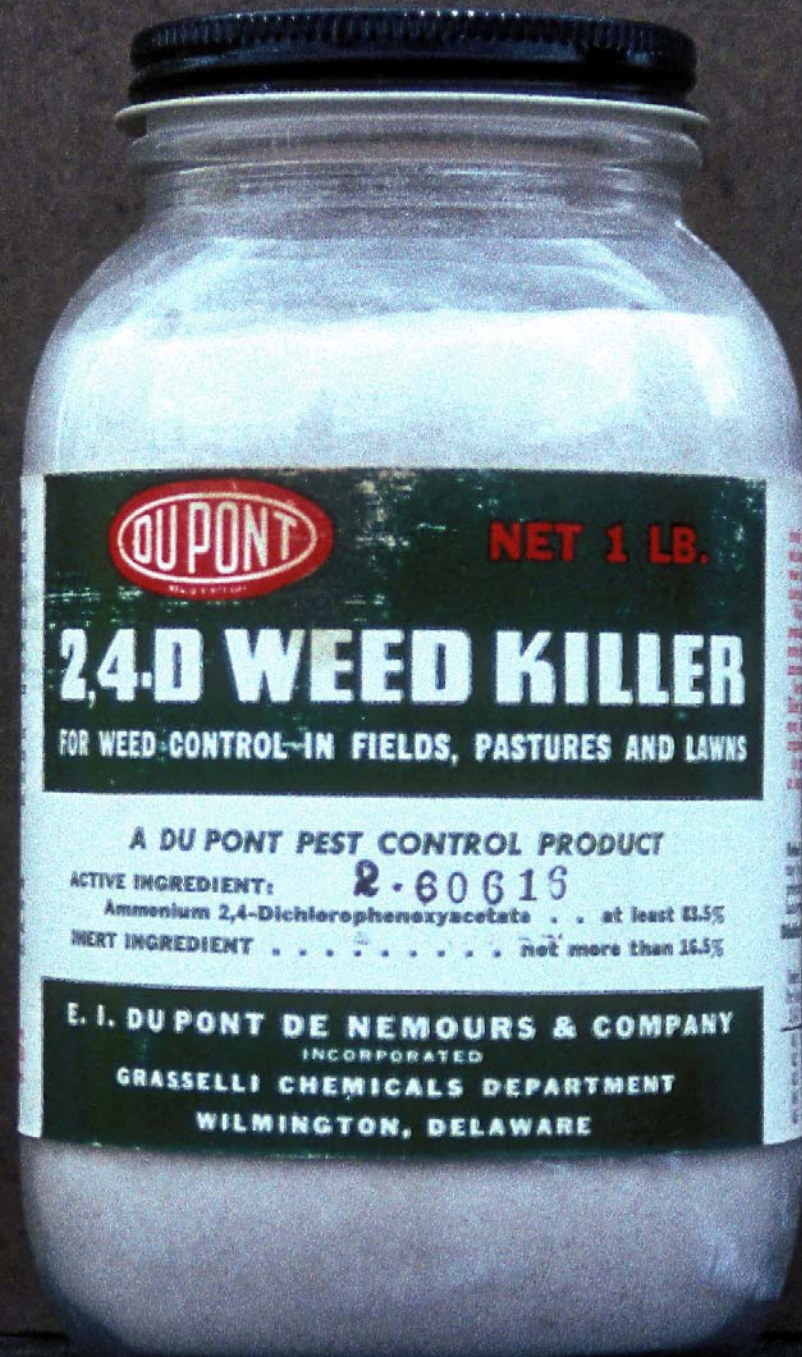
1988 – 1st Event

**101 customers brought
21 tons to Yakima**

2,4-D

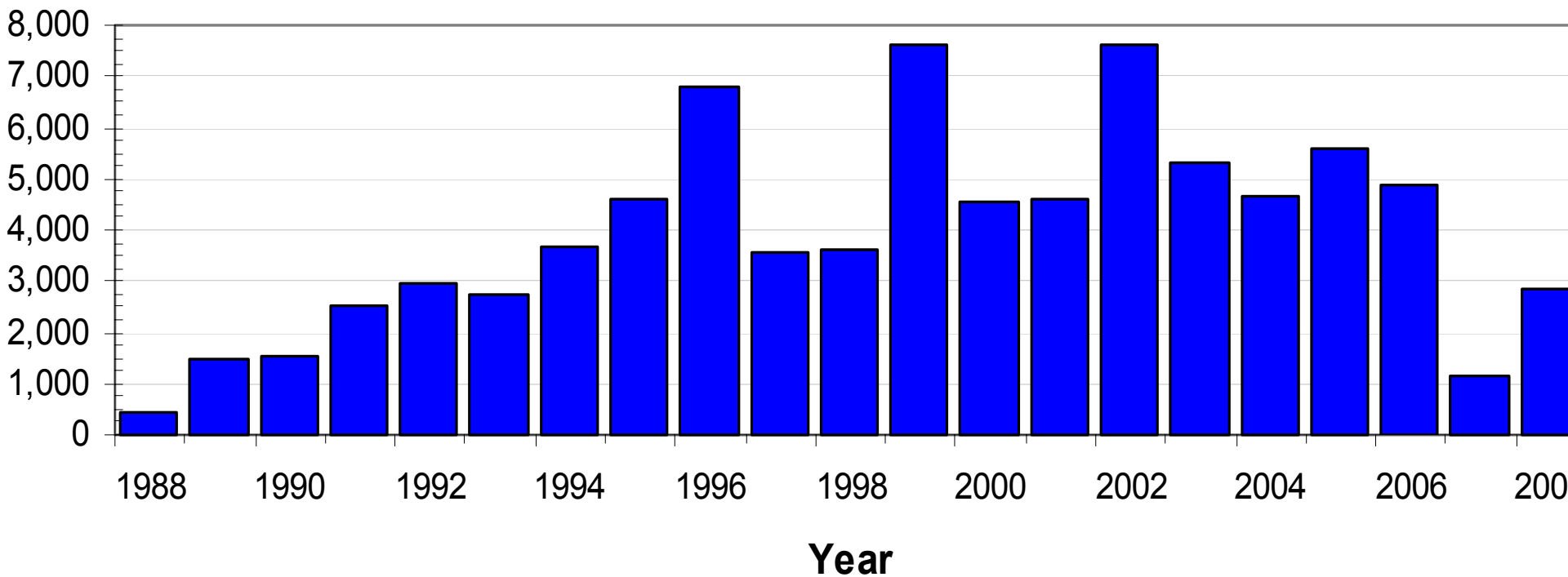
83.5 % A.I.

**A new and
promising
weed killer.**



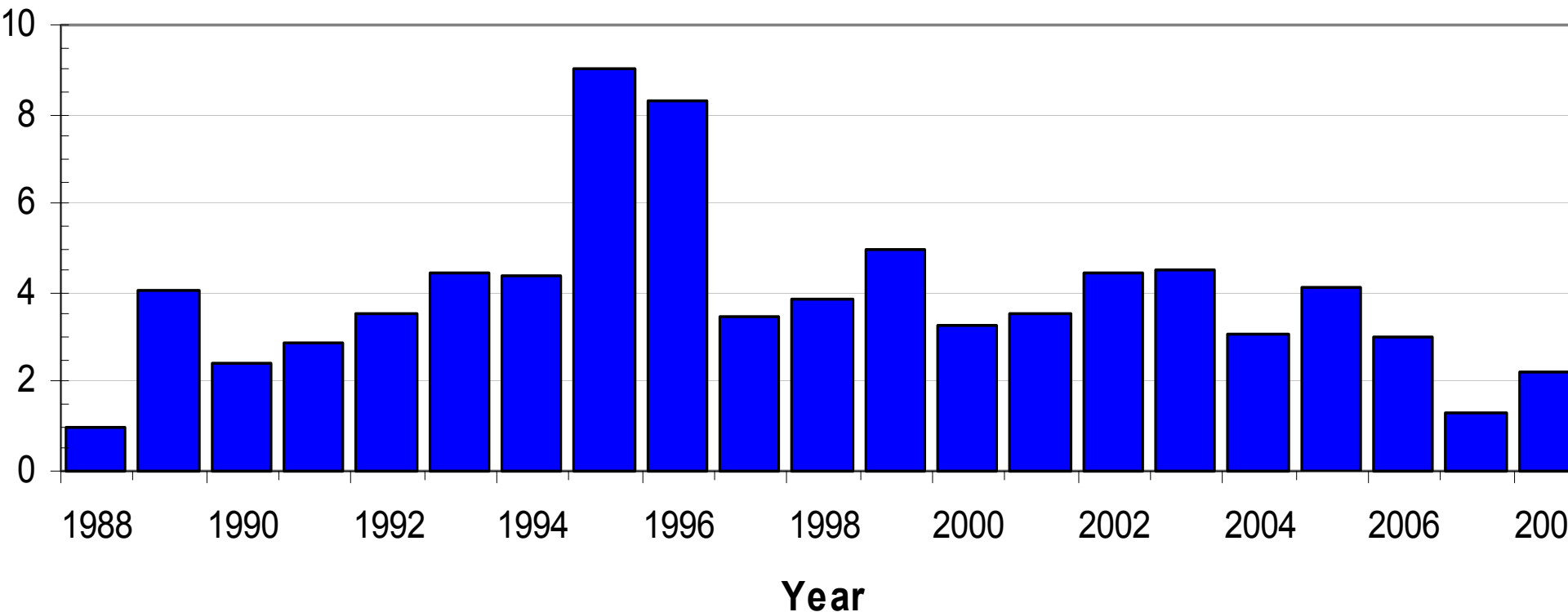
2,4-D – 82,846 pounds

Pounds of 2,4-D Collected per Year



2,4-D – % of total – 3.8%

2,4-D as a Percentage of All Chemicals Collected per Year

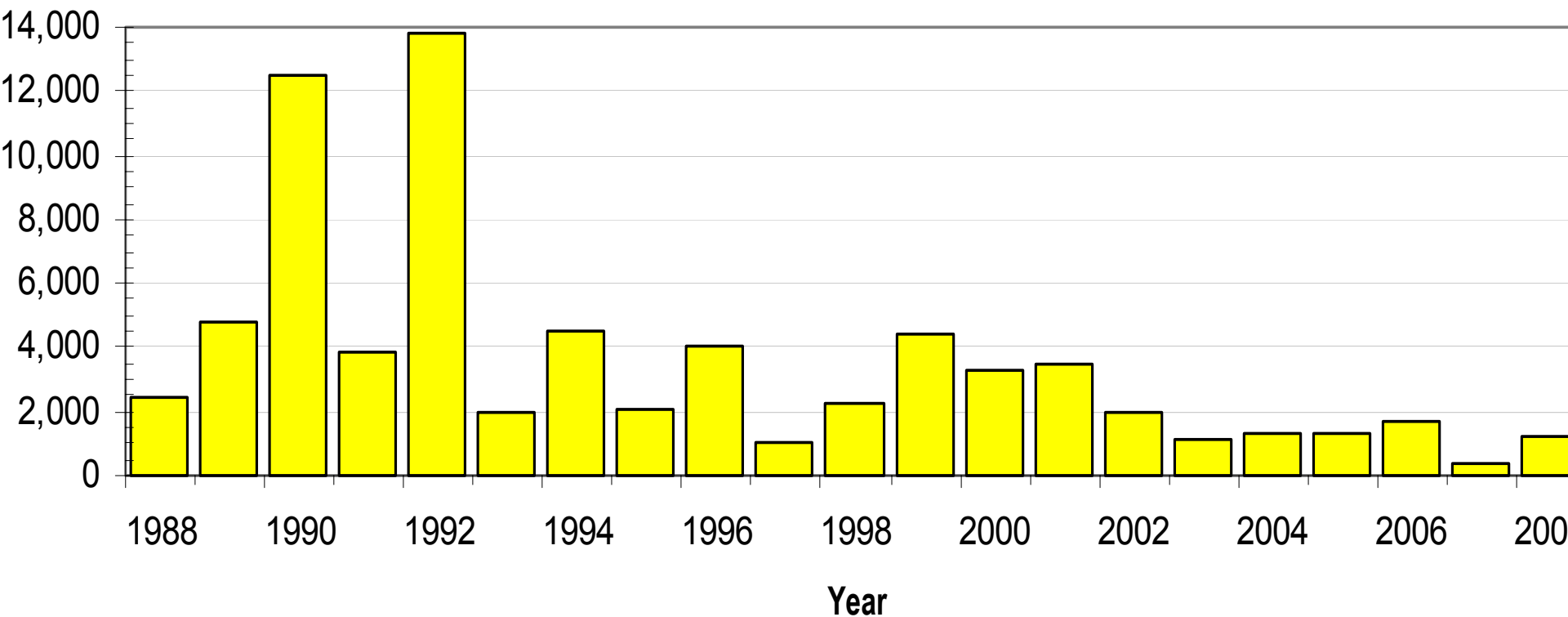


Alinoseb – the “General Weed Killer”



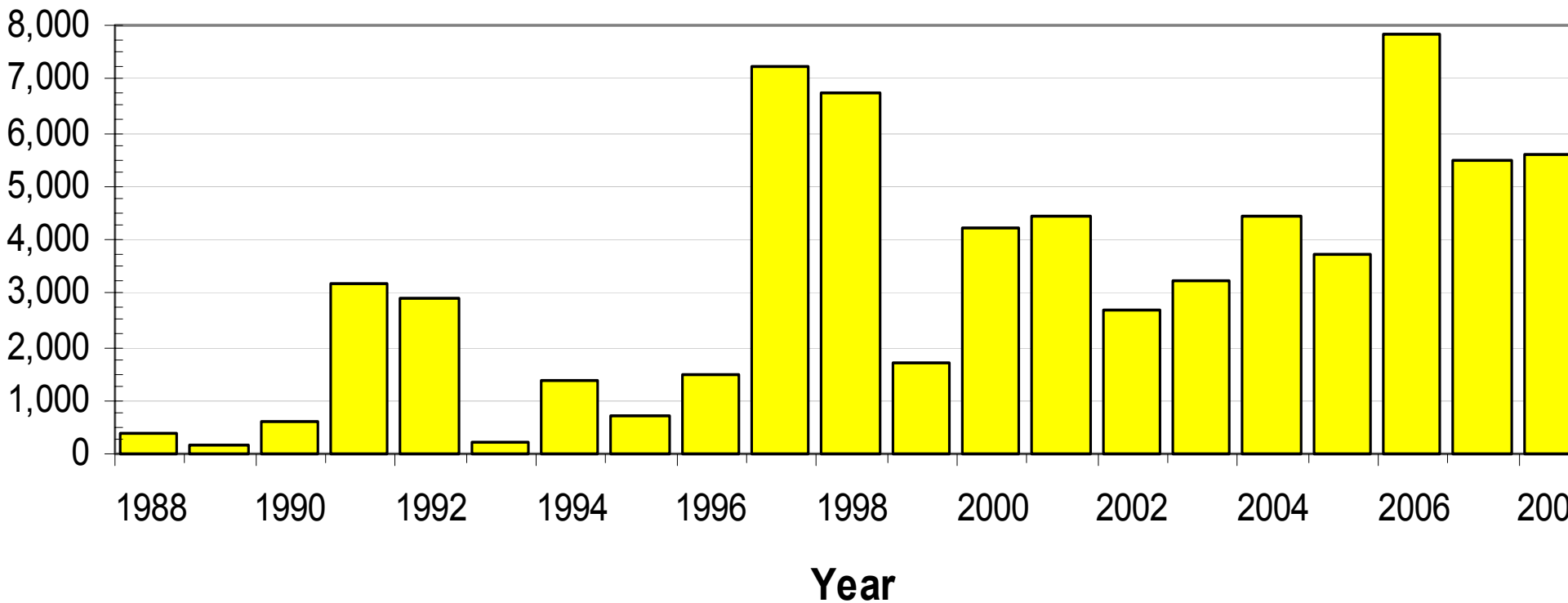
Dinoseb – 73,307 pounds

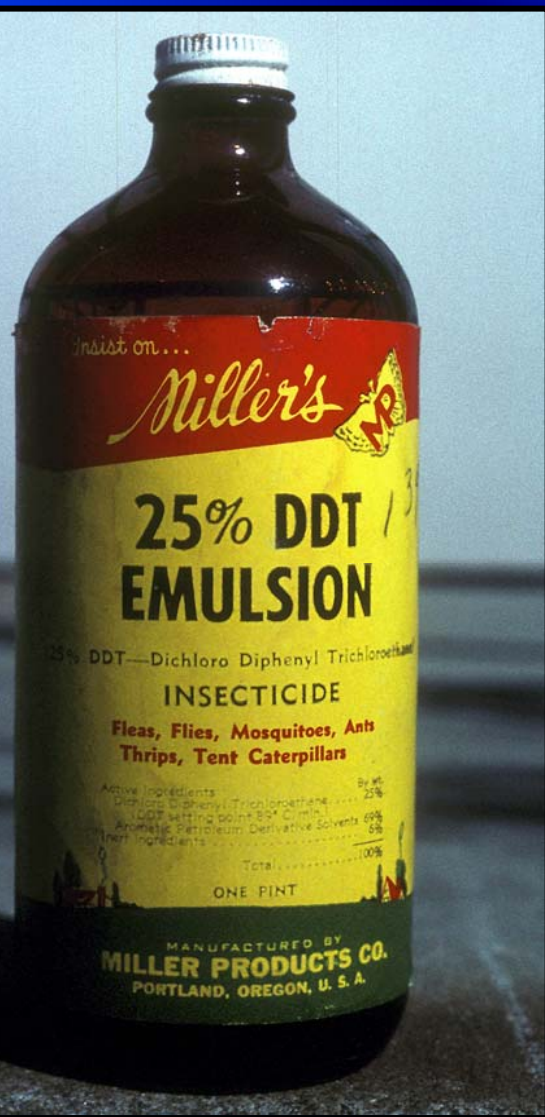
Pounds of Dinoseb Collected per Year



Sulfur – 68,309 pounds

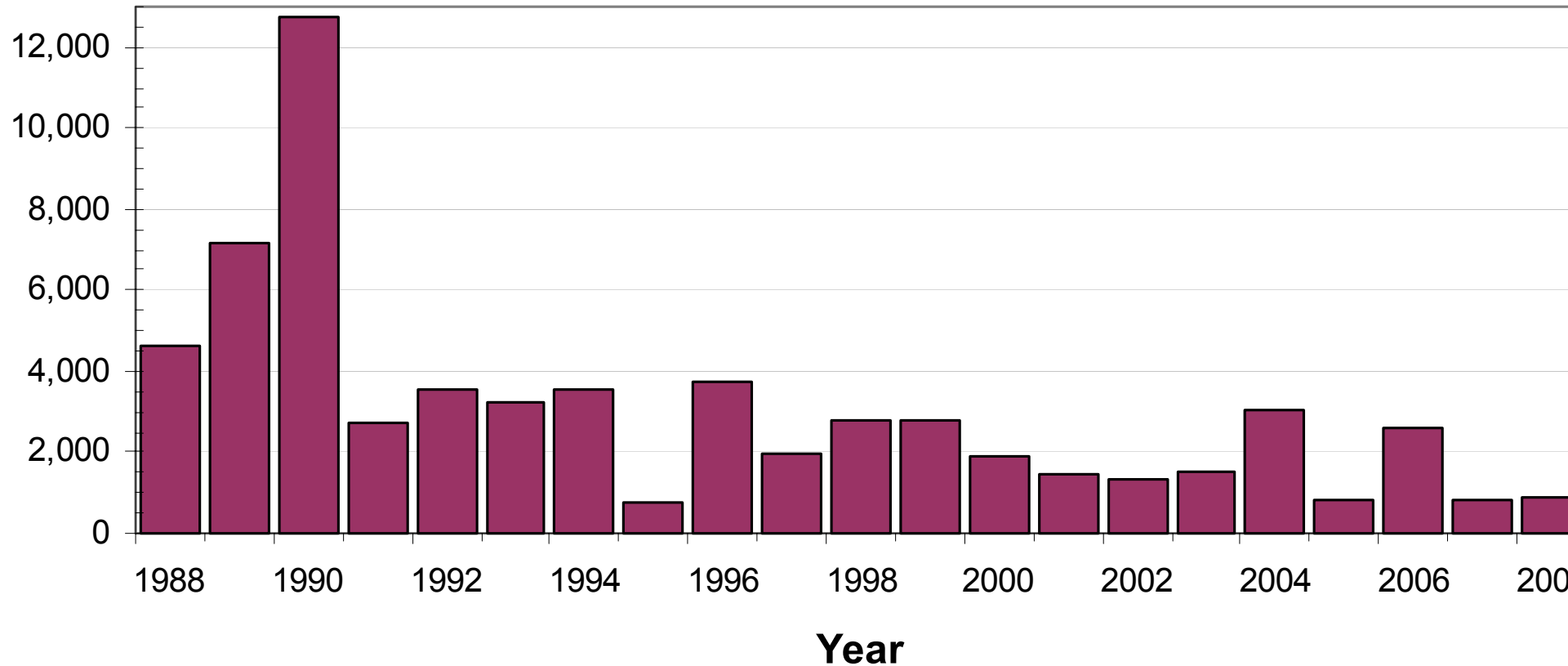
Pounds of Sulfur Collected per Year





DDT – 64,254 pounds

Pounds of DDT Collected per Year



Stauffer
CHEMICALS

DDT 50-WP

A WETTABLE POWDER
FOR USE IN WATER AS AN INSECTICIDE

ACTIVE INGREDIENT:

DDT (Dichloro-diphenyl-trichloroethane) 50%

INERT INGREDIENTS: 50%

100%

CAUTION

HARMFUL IF SWALLOWED. Avoid skin contact with solutions. Avoid breathing dust and spray mist. Wash thoroughly after handling. Avoid contamination of feed and foodstuffs.

KEEP OUT OF REACH OF CHILDREN

OBSERVE THE FOLLOWING USE PRECAUTIONS

Observe limitations given for specific crops.

Do not apply to dairy animals, to animals being finished for slaughter, or in dairy barns.

Do not apply on feed or forage crops to be fed to dairy animals or to animals being finished for slaughter.

DDT may cause injury to certain varieties of cucurbits (cantaloupe, cucumber, squash, melon) and under certain conditions to beans and tomatoes.

Do not apply during bloom when honey bees or other pollinators are active. Avoid drift to adjoining food and forage crops or crops in bloom.

To protect fish and wildlife, do not contaminate ponds, lakes, or streams with this material.

The Federal Food and Drug Administration has set official tolerances for certain pesticide residues. In order that residue on food and forage crops will not exceed established tolerances, use only at recommended rates, and do not apply closer to harvest than specified.

Consult Agricultural Authorities for specific information as the timing, number, and rate of applications will vary with local conditions.

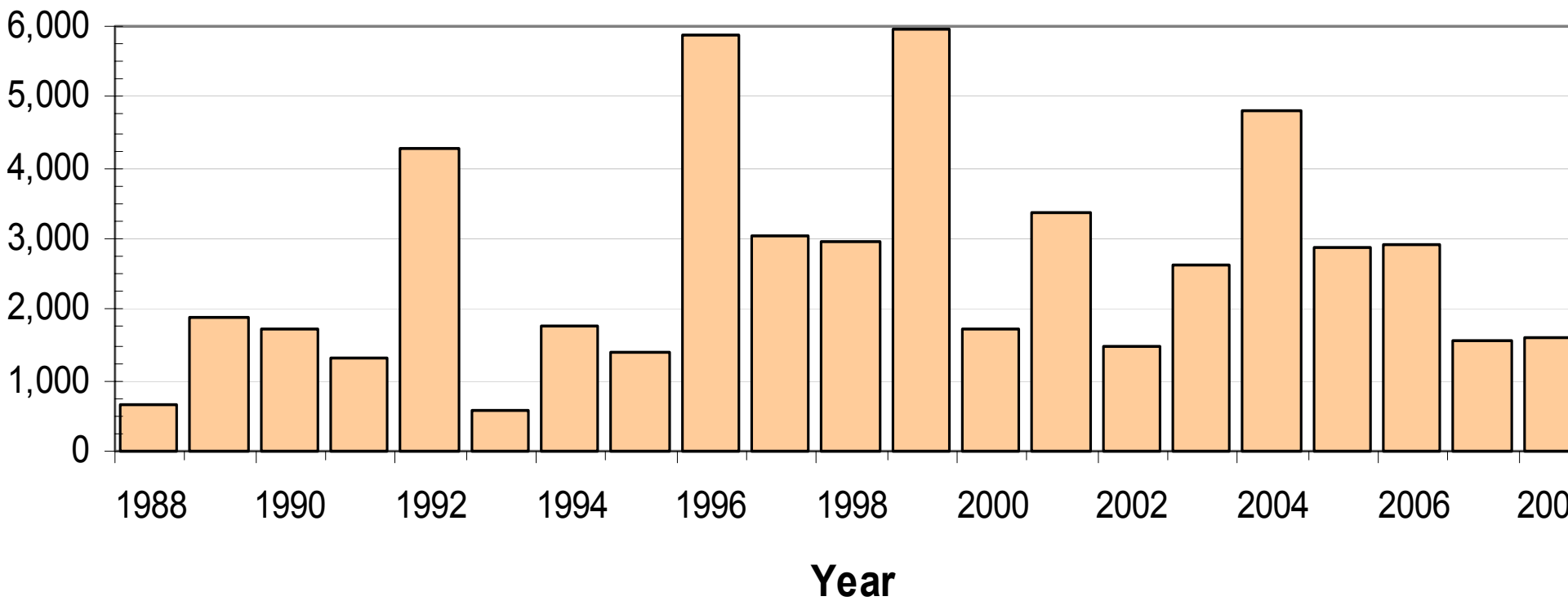
NOTICE: Stauffer Chemical Company makes no warranty of merchantability or any other express or implied warranty concerning this material. It shall not be held responsible for personal injury, property damage, or other loss resulting from the handling, storage or use of this material. The buyer assumes all risk and liability resulting from such handling, storage or use.

STAUFFER CHEMICAL CO.
NEW YORK

NET WEIGHT 4 LBS.

Malathion – 54,447 pounds

Pounds of Malathion Collected per Year



PRECAUTIONARY STATEMENTS

HAZARDS TO HUMANS AND DOMESTIC ANIMALS

Parathion is highly toxic. Inhaled or Absorbed Through Skin. Rapidly absorbed through skin. Repeated inhalation or skin contact may, without symptoms, progressively increase susceptibility to Parathion poisoning. Ingestion of small amounts swallowed even in small amounts; spray mist or dust may be absorbed through the mouth if touched by hands or spilled or splashed on skin. Eyes are highly susceptible to Parathion poisoning. Breathing vapors, spray mist or dust may be absorbed through the nose. Breathing vapors, spray mist or dust may be absorbed through the mouth. Persons who work in treated areas within 48 hours must wear protective clothing.

CURRENT OF PRACTICAL TREATMENT

Call a physician, clinic or hospital immediately. Explain that victim has been exposed to Parathion and describe his condition.

If breathing has stopped, start artificial respiration immediately and maintain it until breathing resumes.

IF SWALLOWED: Drink one or two glasses of water and induce vomiting by touching the back of the throat with your finger. Do not induce vomiting if anything by mouth to an unconscious person. Get medical attention.

IF IN EYES: Flush with plenty of water and get medical attention immediately.

IF ON SKIN: Immediately wash with soap and water and get medical attention.

POISON SIGNS (Symptoms)

Signs and symptoms of acute poisoning: A rapidly aching body on contact with all skin areas on the face. Choking wet with this material must be removed immediately. Consciousness may be lost. Prompt medical treatment or they may die. Some of the signs and symptoms of acute poisoning are: headache, nausea, vomiting, cramps, weakness, salivation, profuse sweating, tightness in chest, labored breathing, nervousness, watery, tearing of eyes, drooling or frothing of mouth and nose, muscle twitching.

NOTE TO PHYSICIAN

Parathion is a highly toxic insecticide. In large doses, TWO (2) GRAMS (2000 mg.) intravenously may be fatal. Parathion is also a powerful emetic. Repeat at 5 to 10 minute intervals until signs of emesis are gone. Parathion is also an antidote and may be administered in large doses. DO NOT GIVE MORPHINE OR TRANQUILIZERS. Parathion is a potent cholinesterase inhibitor affecting the central and peripheral nervous systems and producing cardiac and respiratory depression. At first sign of cholinergic excess should be given supplemental oxygen and treated symptomatically. Convulsions and the color may occur and fatal relapses have been reported after treatment. VERY CLOSE SUPERVISION OF THE PATIENT IS INDICATED FOR AT LEAST 48 HOURS.

USE PESTICIDE

Due to very high acute toxicity to Humans and Birds

For retail sale to and use only by certified applicator or persons under their direct supervision and only for those uses covered by the certified applicator's certification. Direct supervision for this product is defined as the certified applicator being physically present during application, mixing, loading, repair and cleaning of application equipment. Commercial certified applicators must also ensure that all persons involved in these activities are informed of the precautionary statements.

Wilbur-Ellis

PARATHION 8 FLOWABLE

| | |
|--|--------------------|
| ACTIVE INGREDIENTS: | By Weight |
| Parathion: O, O-diethyl O-p-nitrophenyl Phosphorothioate | 87.0% |
| INERT INGREDIENTS: | 20.0% |
| This product contains 8 lbs. of Parathion per gallon. | |
| EPA Reg. No. 2935-329-AA | Est. No. 2935-CA-1 |

STOP — READ LABEL BEFORE USING!

PELIGRO POISON

PRECAUTION ALLUSUARIO: Si usted no lee ingles, no use este producto hasta que le expliquen como usarlo.

See Side Panels for Antidote and Precautions

KEEP OUT OF REACH OF CHILDREN

Wilbur-Ellis

P.O. Box 16458, Fresno, CA 93755

ENVIRONMENTAL HAZARDS

This pesticide is highly toxic to fish and wildlife. Birds in treated areas may be killed. Do not apply directly to water or wetlands (swamps, marshes, bogs, and bays). Runoff and drift from target areas may be hazardous to aquatic organisms in adjacent water bodies. Do not contaminate water by cleaning of equipment or disposal of wastes.

This product is extremely toxic to bees exposed to direct treatment of blooming crops or weeds. Do not apply this product or allow to drift to blooming crops or weeds if bees are visiting the treatment area.

CHEMICAL AND PHYSICAL HAZARDS

KEEP AWAY FROM HEAT OR OPEN FLAME

WORK SAFETY RULES

Keep all unprotected persons and children away from treated area or where there is danger of drift.

Do not rub eyes or mouth with hands. If you feel sick in any way, STOP work and get help right away. Call a doctor (physician), clinic or hospital — immediately. Explain that the victim has been exposed to parathion and describe his condition. Antidote is given (see First Aid Treatment Section) and if a doctor cannot come, take victim to clinic or hospital.

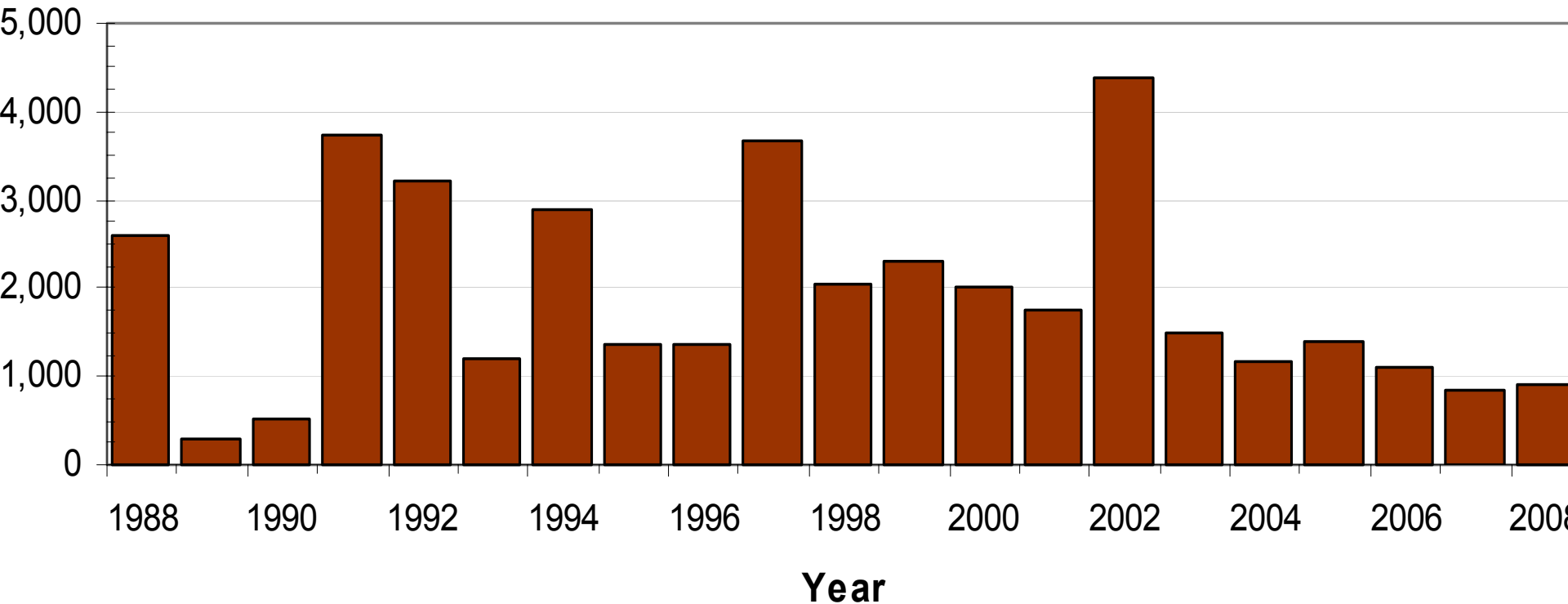
THIS PRODUCT MAY BE FATAL IF SWALLOWED, INHALLED, OR IF ALLOWED TO CONTACT SKIN. FAILURE TO PROPERLY FOLLOW ALL INSTRUCTIONS FOR PROTECTIVE CLOTHING AND EQUIPMENT WILL INCREASE YOUR RISK.

USE ONLY WHEN WEARING THE FOLLOWING PROTECTIVE CLOTHING AND EQUIPMENT DURING MIXING/LOADING, APPLICATION, REPAIR, AND CLEANING OF APPLICATION EQUIPMENT, DISPOSAL OF PESTICIDE AND EARLY REENTRY INTO TREATED AREAS: Waterproof pants and coat; heavy-duty chemical-resistant gloves; rubber boots or rubber overshoes; hood or wide-brimmed hat; safety goggles or face shield; NIOSH approved respirator. In addition, mixer/loaders must wear a chemical-resistant apron when using the concentrated product. During aerial application in nonenclosed cockpits, a helmet with a visor may be substituted for the hood or wide-brimmed hat and safety goggles or face shield requirements.

IF MIXING/LOADING IS PERFORMED USING A CLOSED SYSTEM, THE FOLLOWING PROTECTIVE CLOTHING AND EQUIPMENT MAY BE WORN AS AN ALTERNATIVE: Heavy-duty chemical resistant gloves; chemical resistant apron; long-sleeved shirt (or gauntlets and short-sleeved shirt) and long-legged pants; shoes and socks; Safety goggles or a faceshield must be worn when the system is under pressure. All other protective clothing and equipment required for use with open systems must be available nearby.

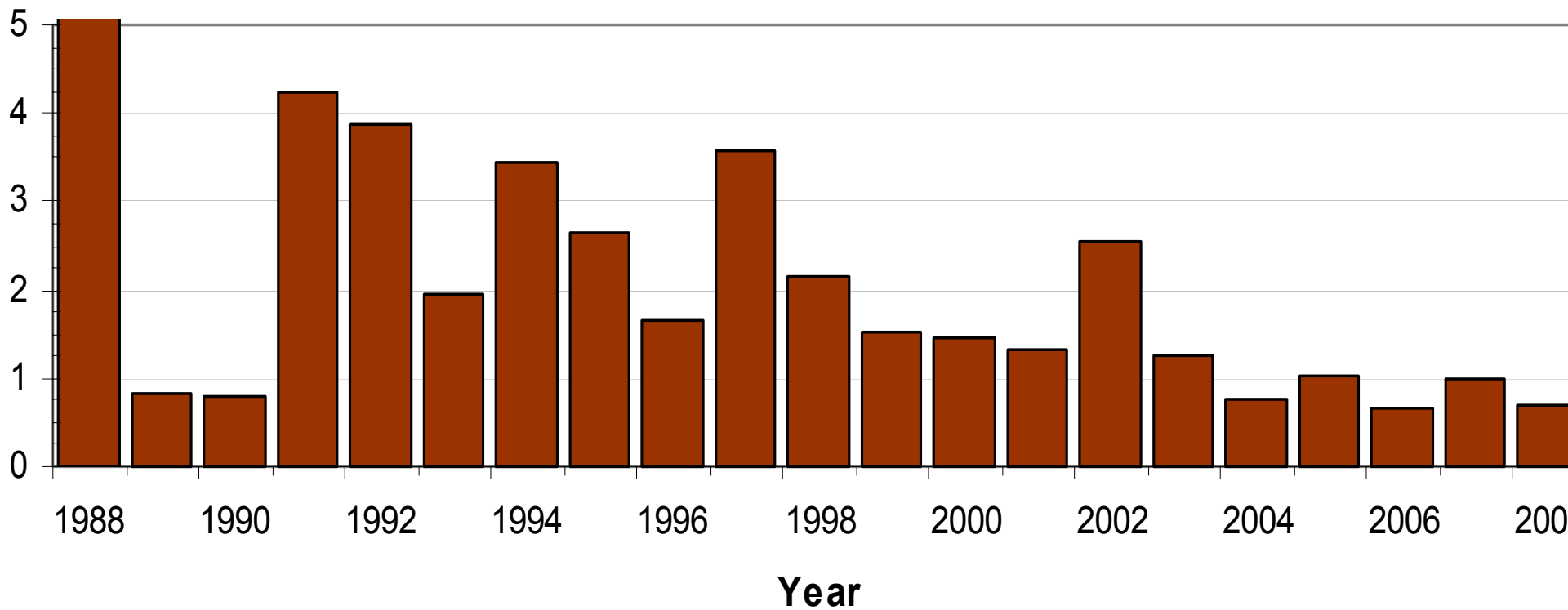
Parathion (ethyl) – 40,192 pounds

Pounds of Parathion Collected per Year



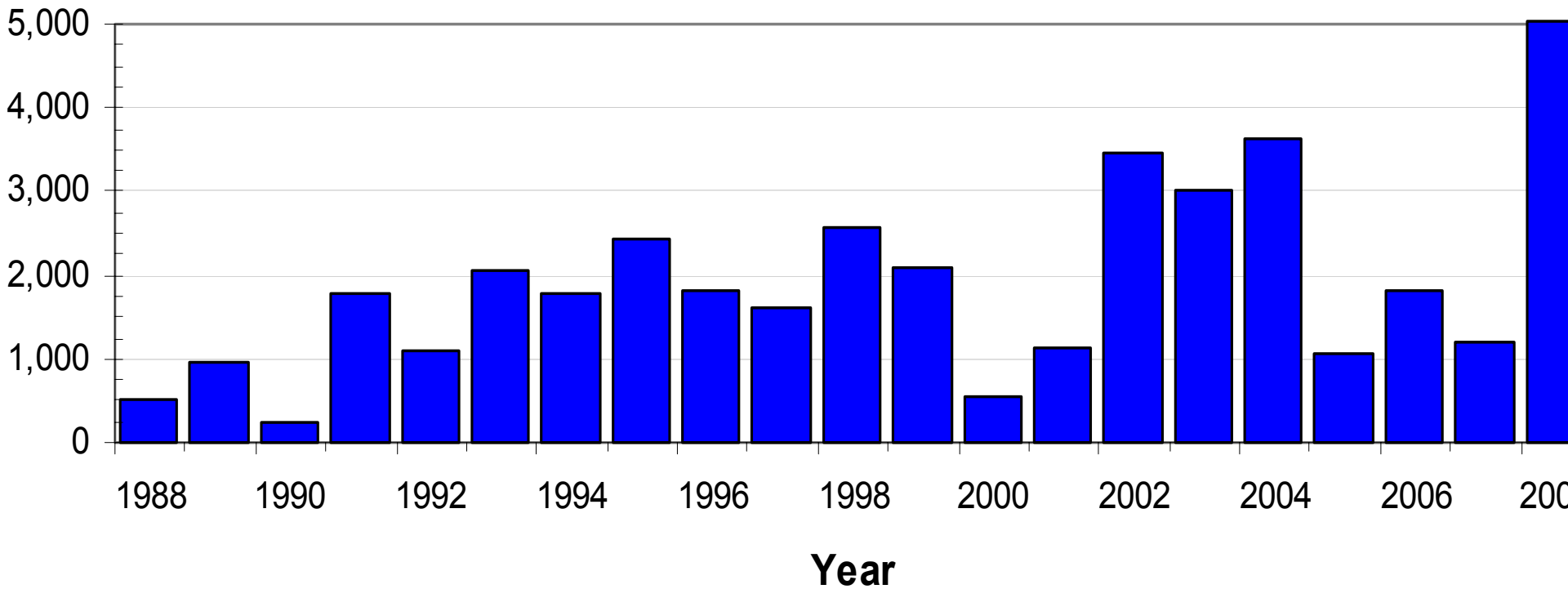
Parathion – % of total – 1.8%

Parathion as a Percentage of All Chemicals Collected per Year



Captan – 39,814 pounds

Pounds of Captan Collected per Year



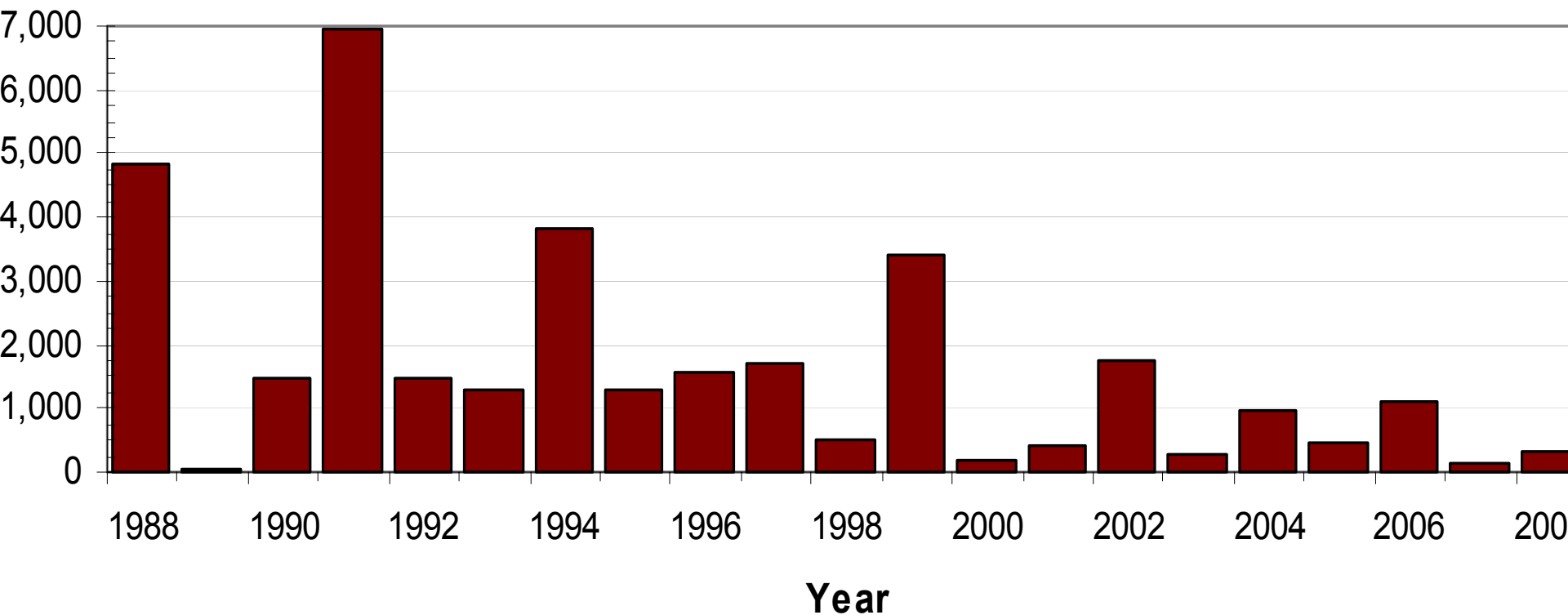
Endrin in a
Glass Jug?

Not a Great
Idea!



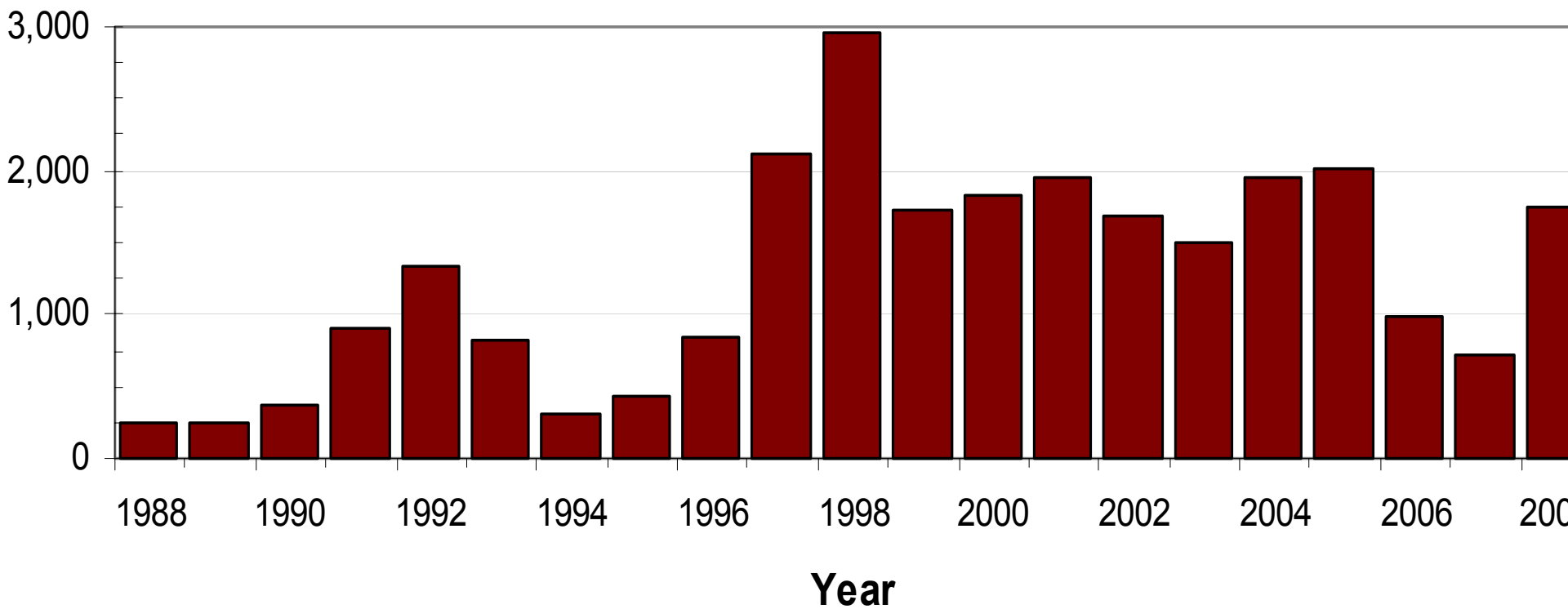
Endrin – 34,077 pounds

Pounds of Endrin Collected per Year



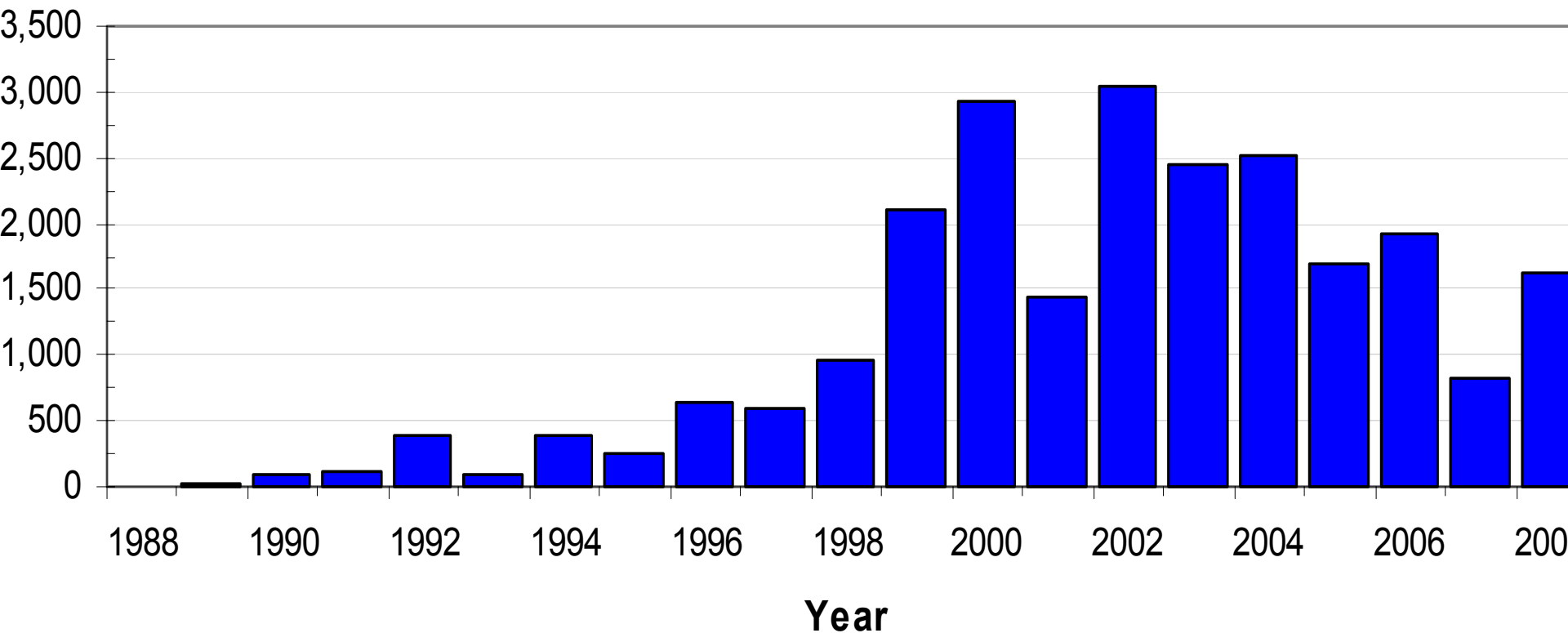
Diazinon – 26,718 pounds

Pounds of Diazinon Collected per Year



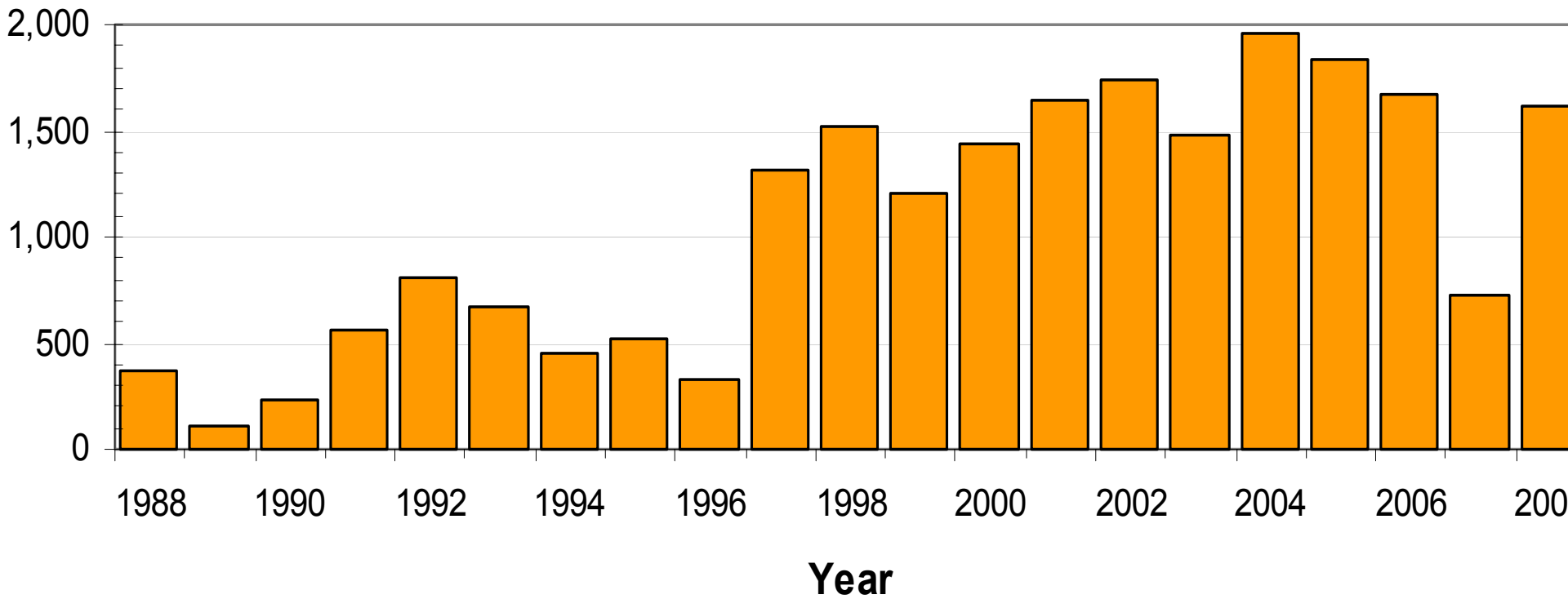
Chlorpyrifos – 24,078 pounds

Pounds of Chlorpyrifos Collected per Year



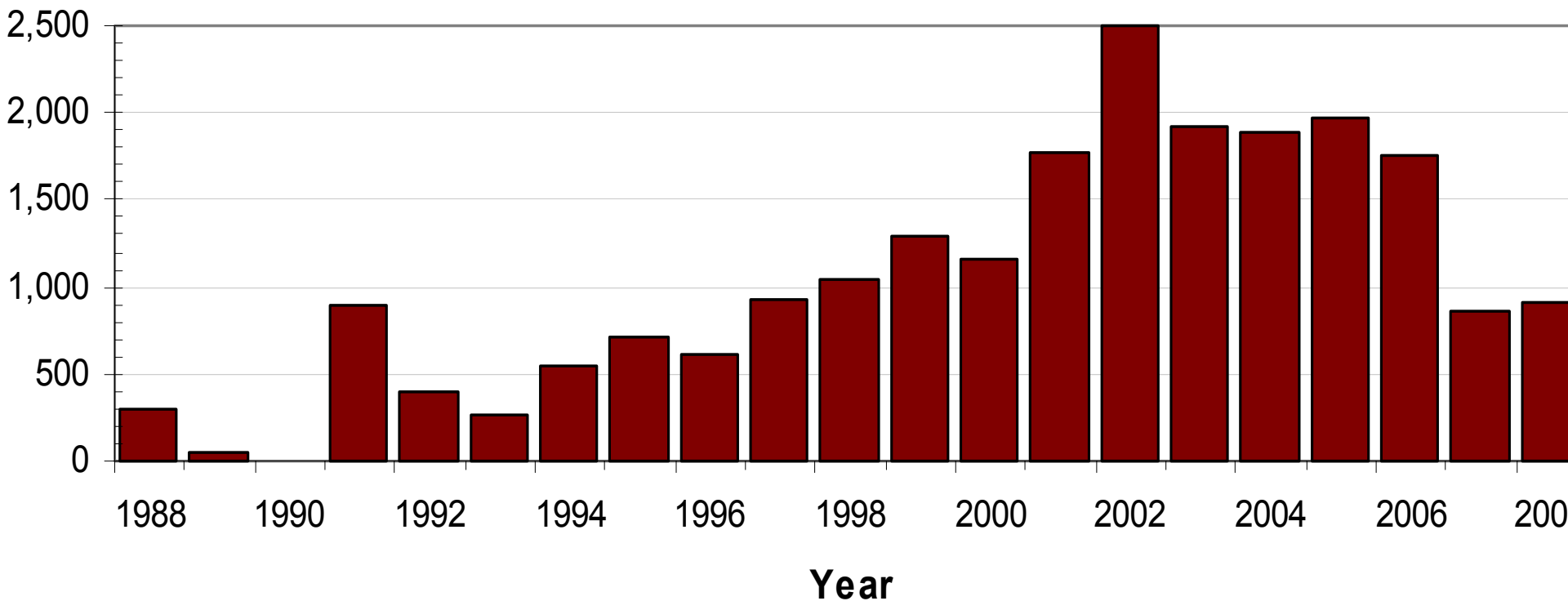
Carbaryl – 22,239 pounds

Pounds of Carbaryl Collected per Year



Methyl Parathion – 21,788 pounds

Pounds of Methyl Parathion Collected per Year

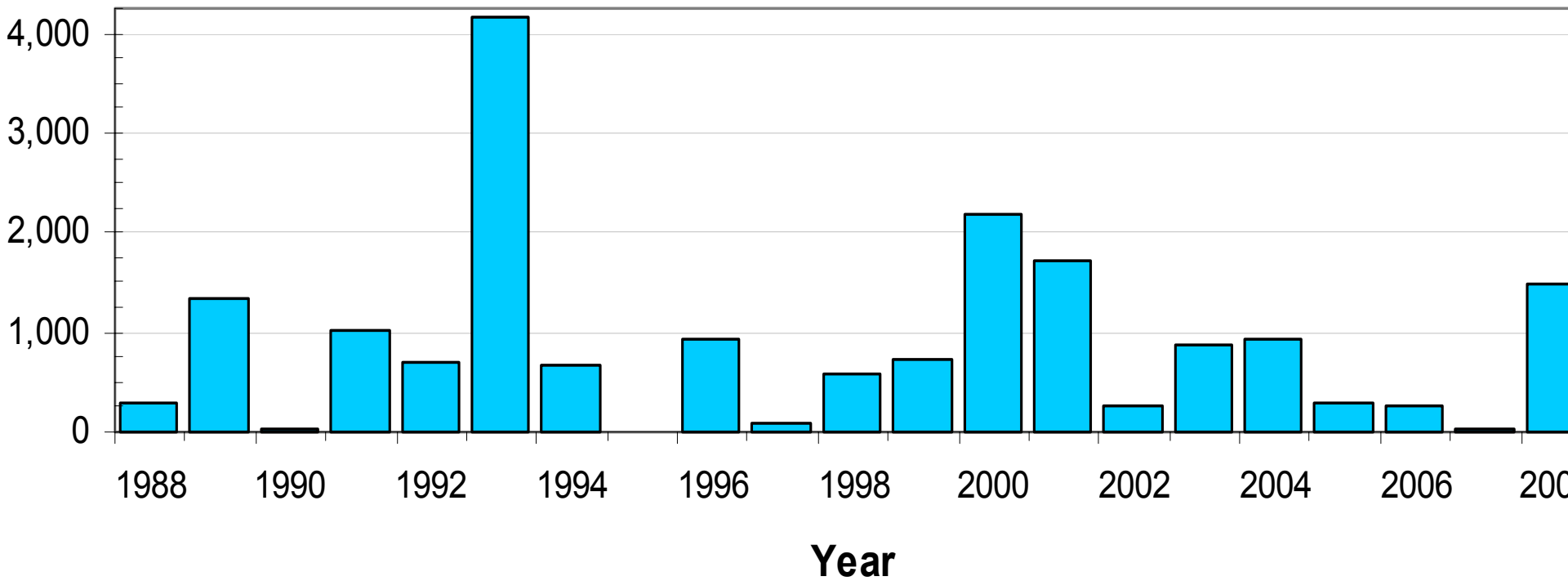


Sodium Chlorate Keg



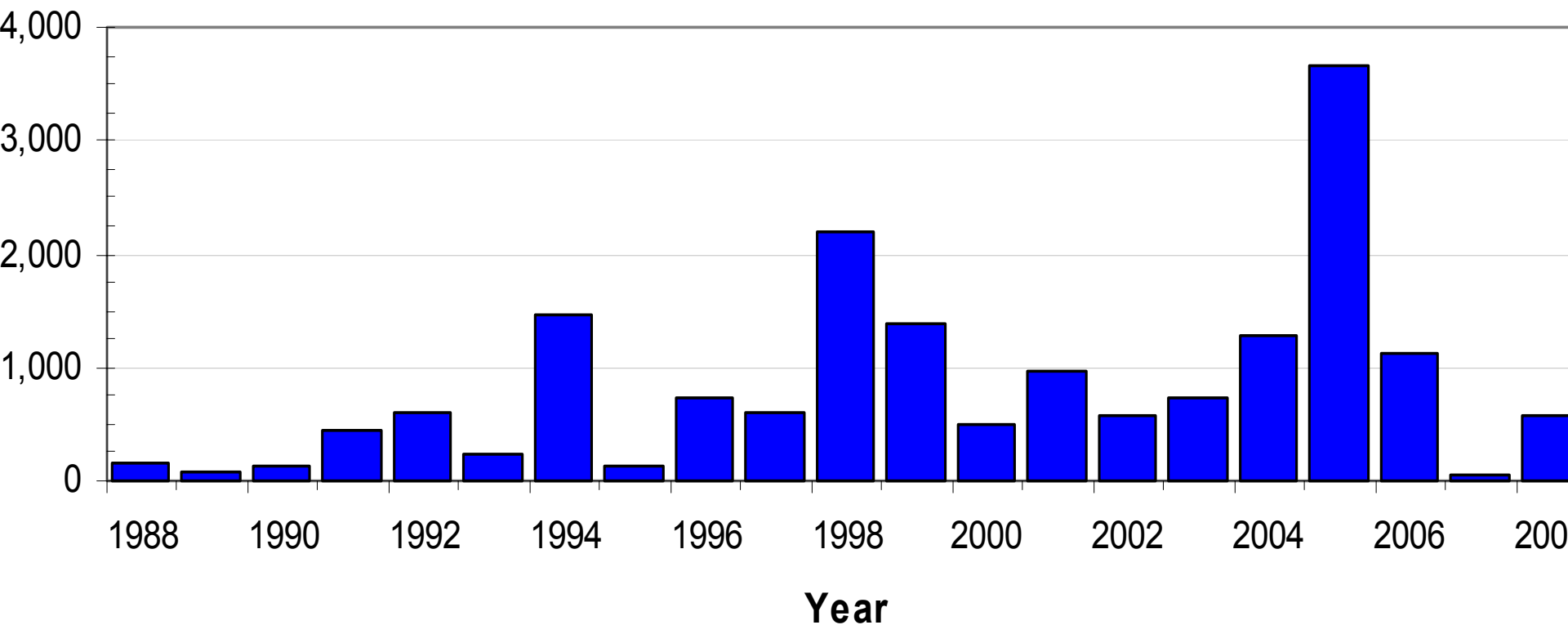
Sodium chlorate – 18,503 pounds

Pounds of Sodium Chlorate Collected per Year



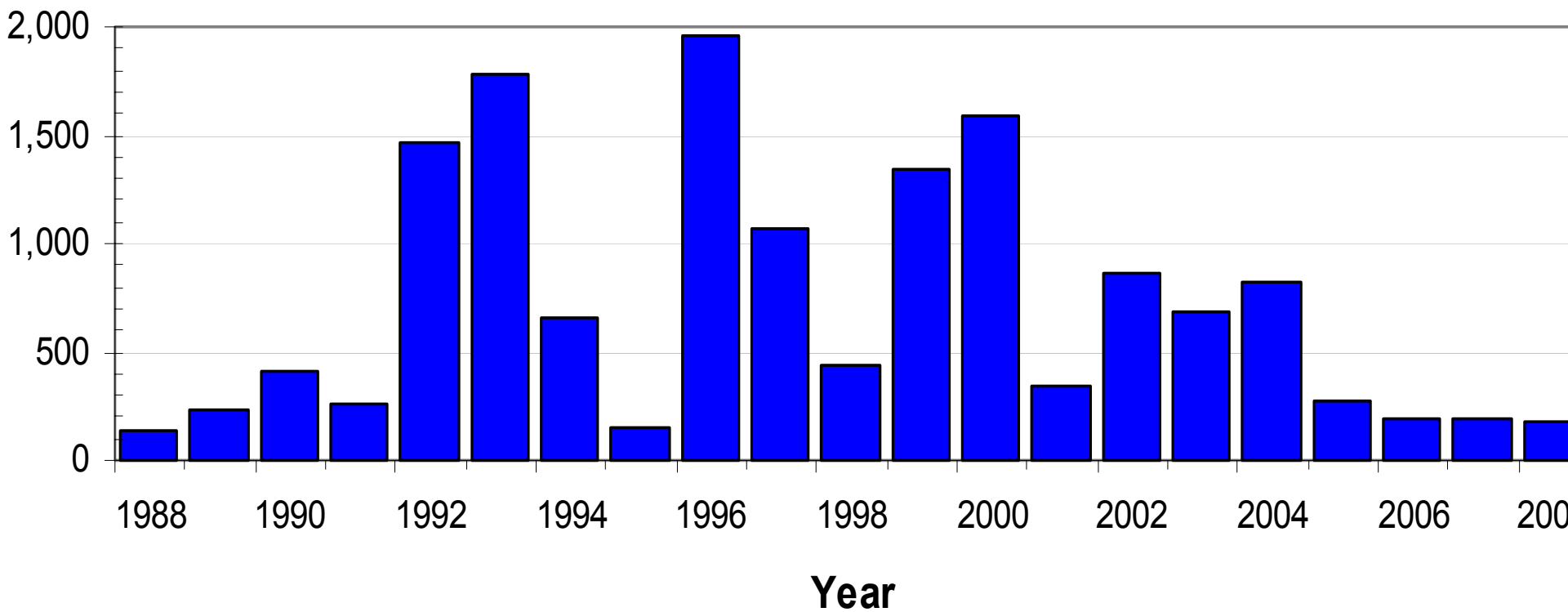
Lindane – 17,604 pounds

Pounds of Lindane Collected per Year



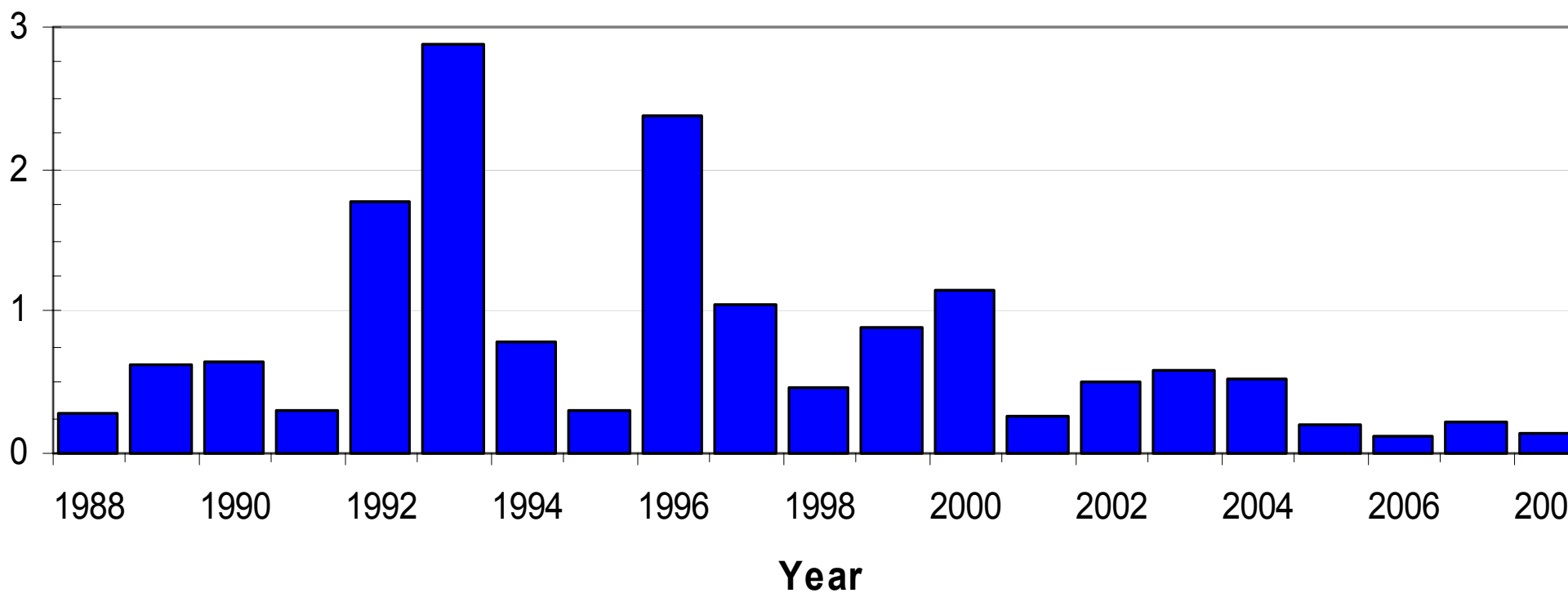
Chlordane – 15,061 pounds

Pounds of Chlordane Collected per Year

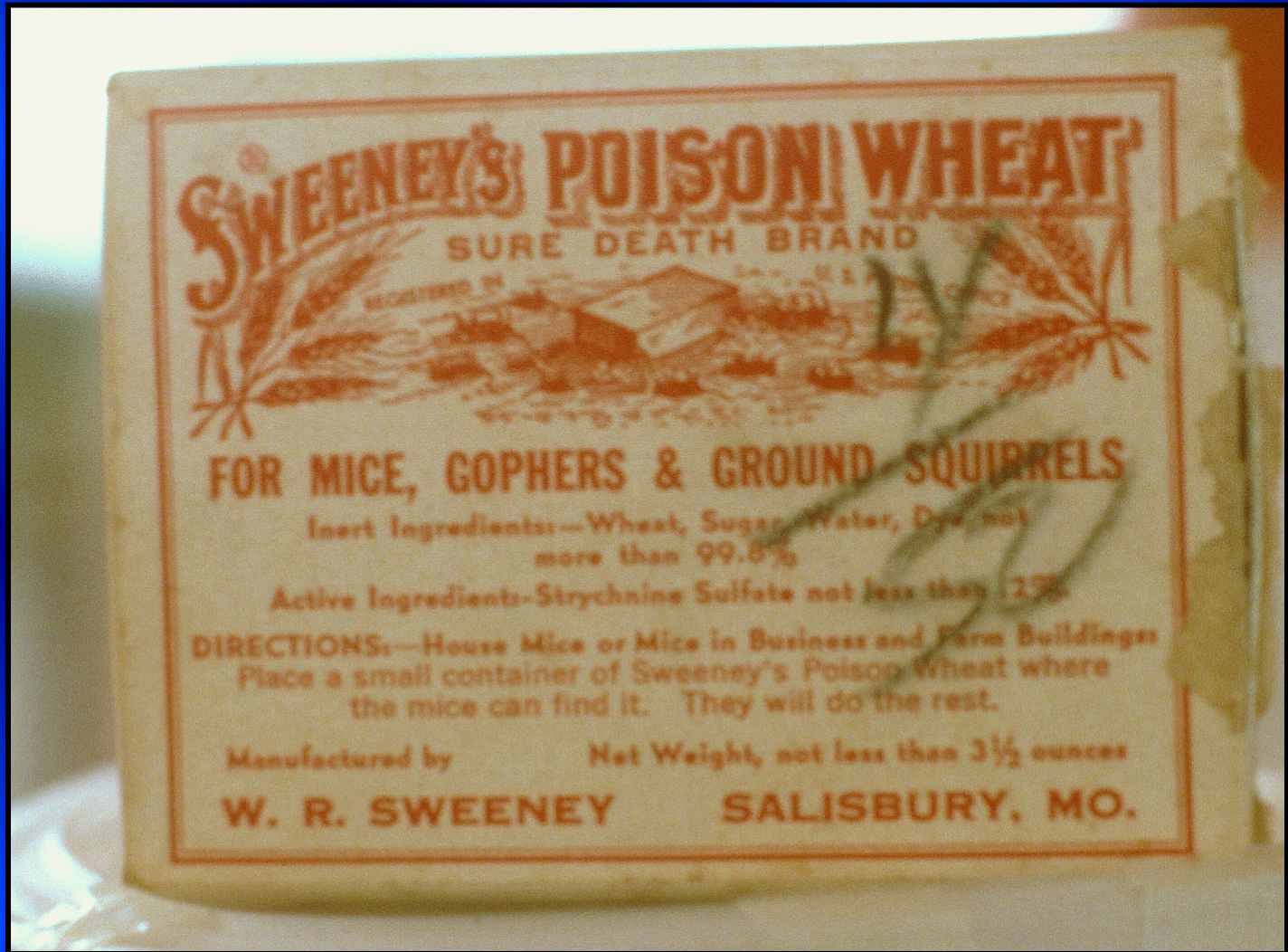


Chlordane – % of total – 0.7%

Chlordane as a Percentage of All Chemicals Collected per Year

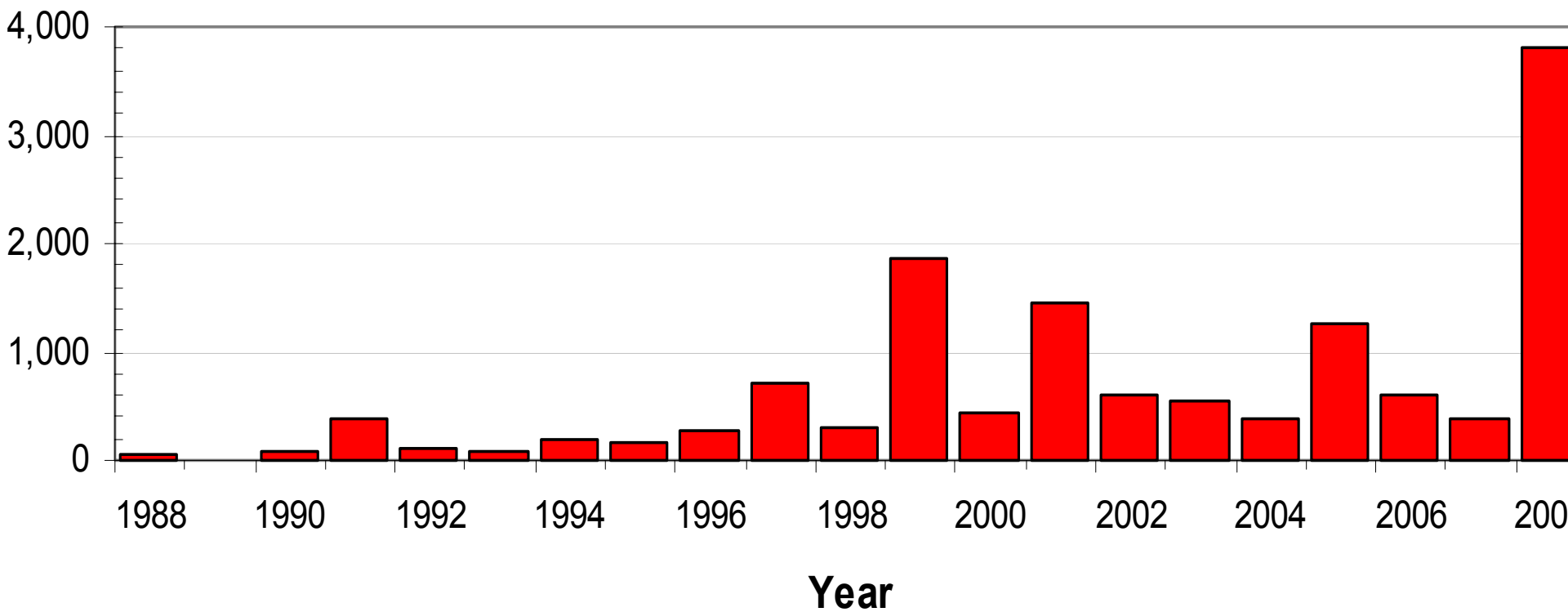


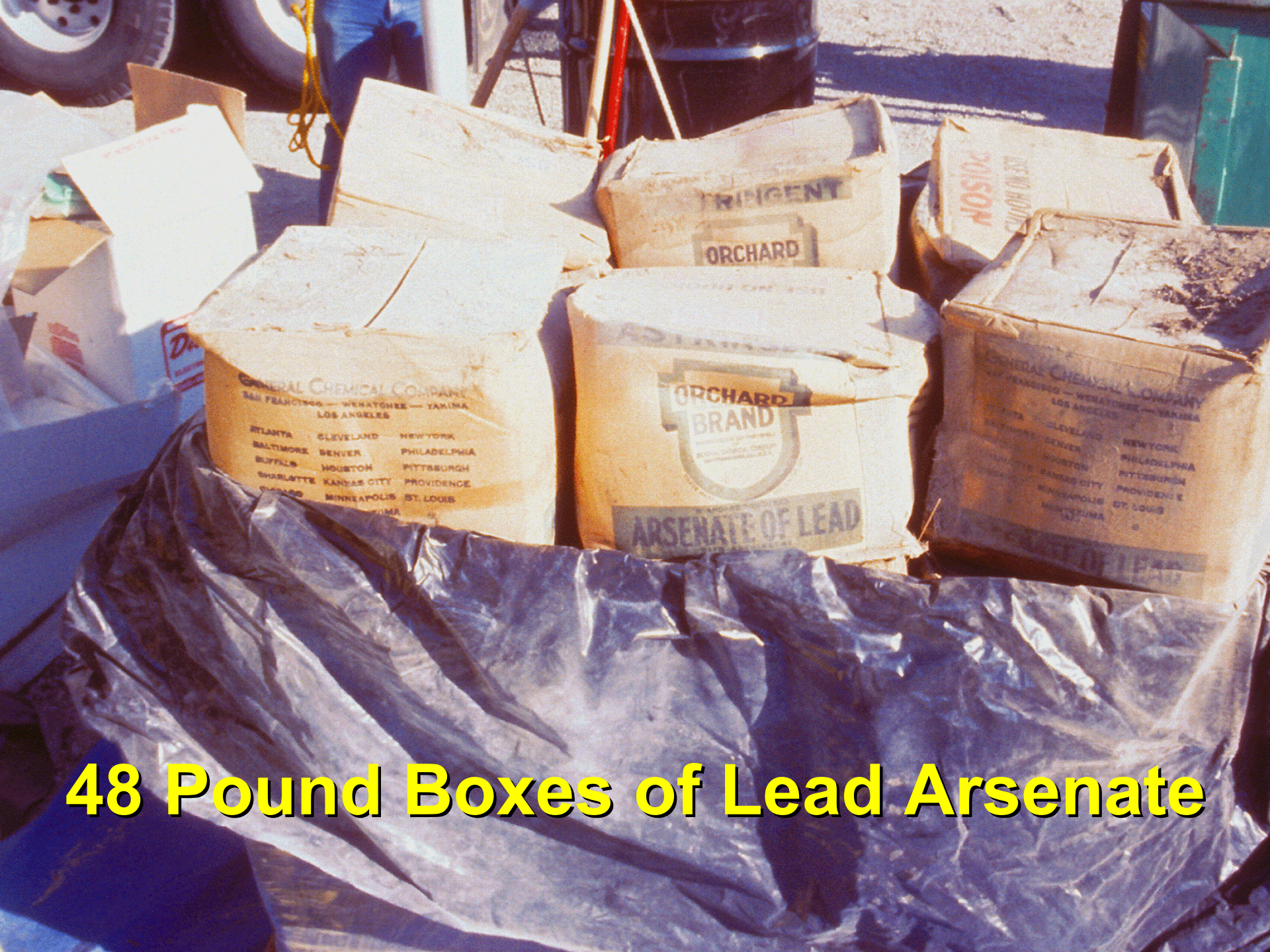
The “Sure Death Brand”



Strychnine – 13,657 pounds

Pounds of Strychnine Collected per Year

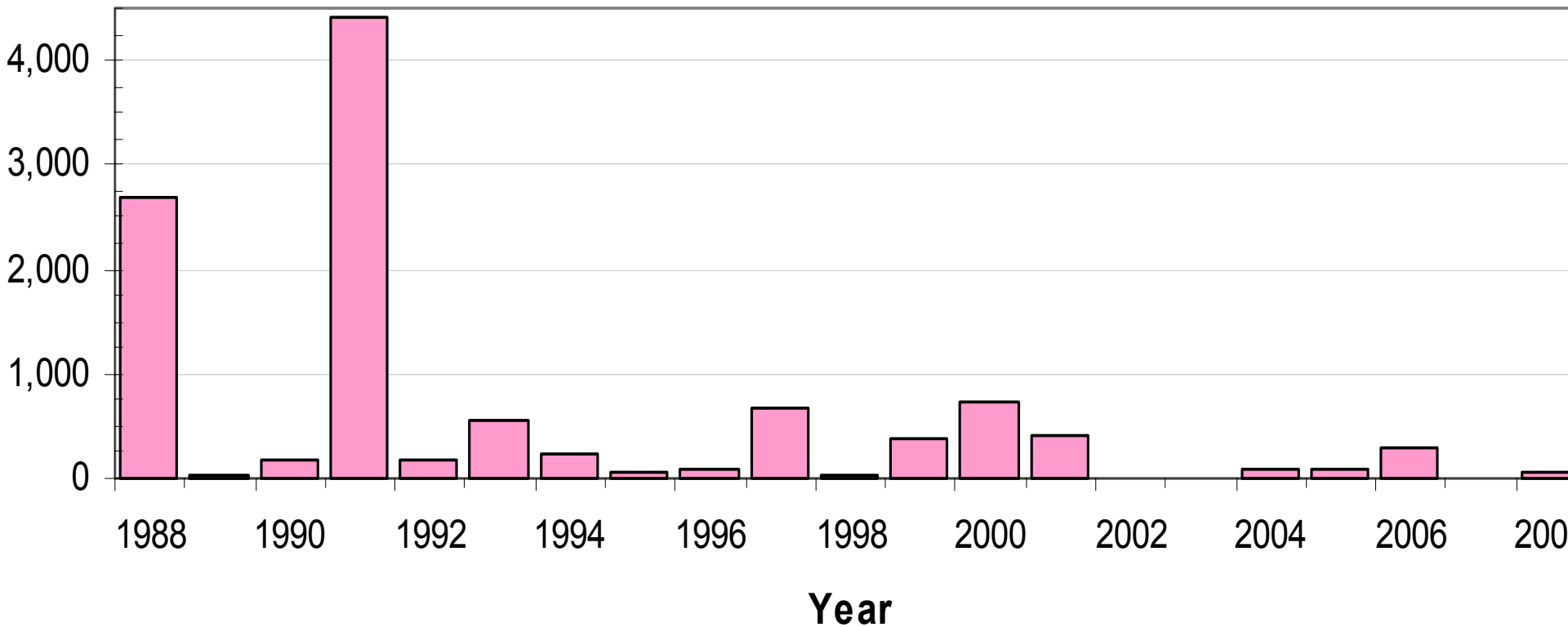




48 Pound Boxes of Lead Arsenate

Lead Arsenate – 11,168 pounds

Pounds of Lead Arsenate Collected per Year



PITTSBURGH

Proof



PRODUCTS

"CORONA DRY"
POWDERED
ARSENATE OF LEAD

PATENTED JUNE 10-1913 NO. 1,064,839



TRADE MARK REG. U.S. PAT. OFF.

SIX
POUNDS

NET
WEIGHT

POISON

| | |
|--|---------------------|
| Active Ingredients: | not less than 99.7% |
| Lead Arsenate | not more than 2.3% |
| Inert Ingredients: | not less than 19.3% |
| Total Arsenic (metallic) | not more than .3% |
| Arsenic (metallic) in water-soluble form | not more than .3% |

SPRAYING & DUSTING MATERIALS

PITTSBURGH PLATE GLASS CO.

CORONA CHEMICAL DIVISION
FACTORIES

MILWAUKEE, WIS. NEWARK, N.J.

AC
ARSENATE

LE

ONE
POUND



ANTIDOTE FOR
Spoonful of salt in a glass
until vomit fluid is clear
of Epsom salt or until
force fluids. Have patient
CALL A PHYSICIAN

THIS PACK
CONTAINS
INERT INGREDIENTS

Total arsenic (by
assay) 20.0% (by
assay) not more than
19.3%

ORTHO
STANDARD
ARSENATE

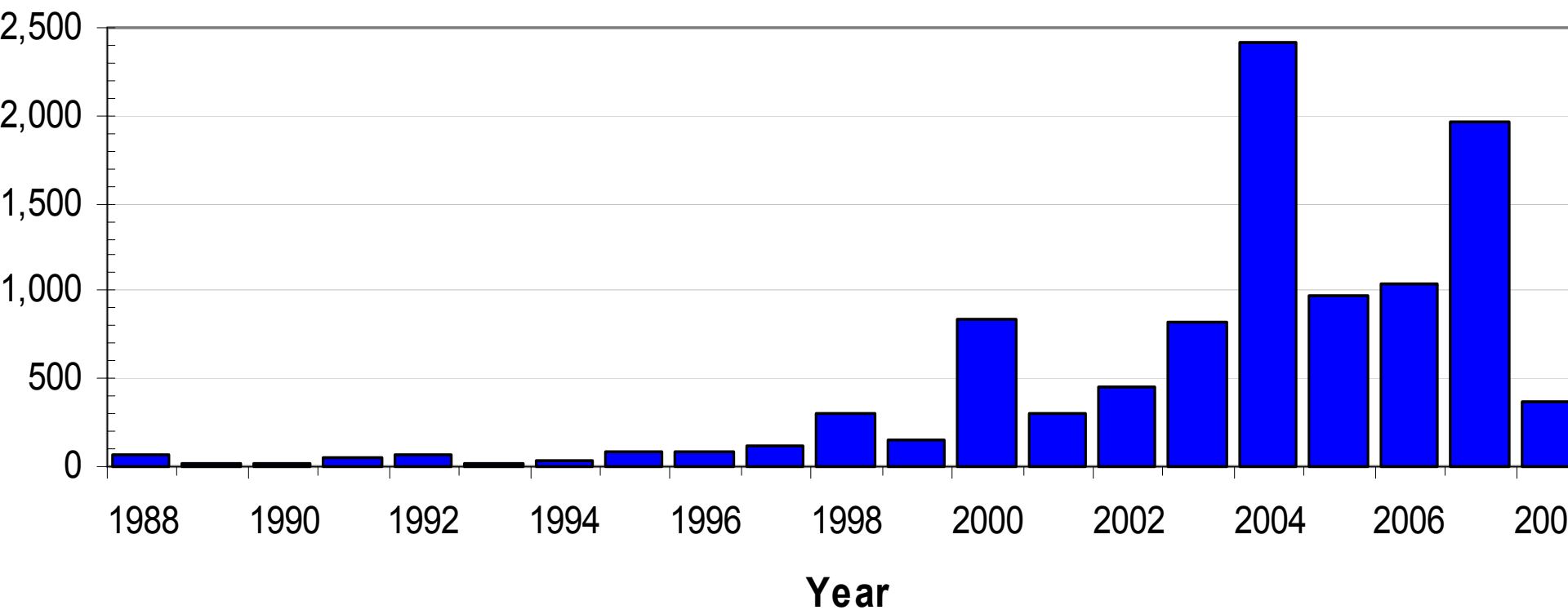
the Control of
OAK MOTH • LEAFROLLER
PILLARS • SOD WEBWORM
EARTHWORMS (Night Crawlers)

and many other pests

Active Ingredient
Standard Lead Arsenate (PbAs₂)
Inert Ingredients
Lead expressed as metallic
Arsenic expressed as metallic
Water-soluble Arsenic (As₂O₃)

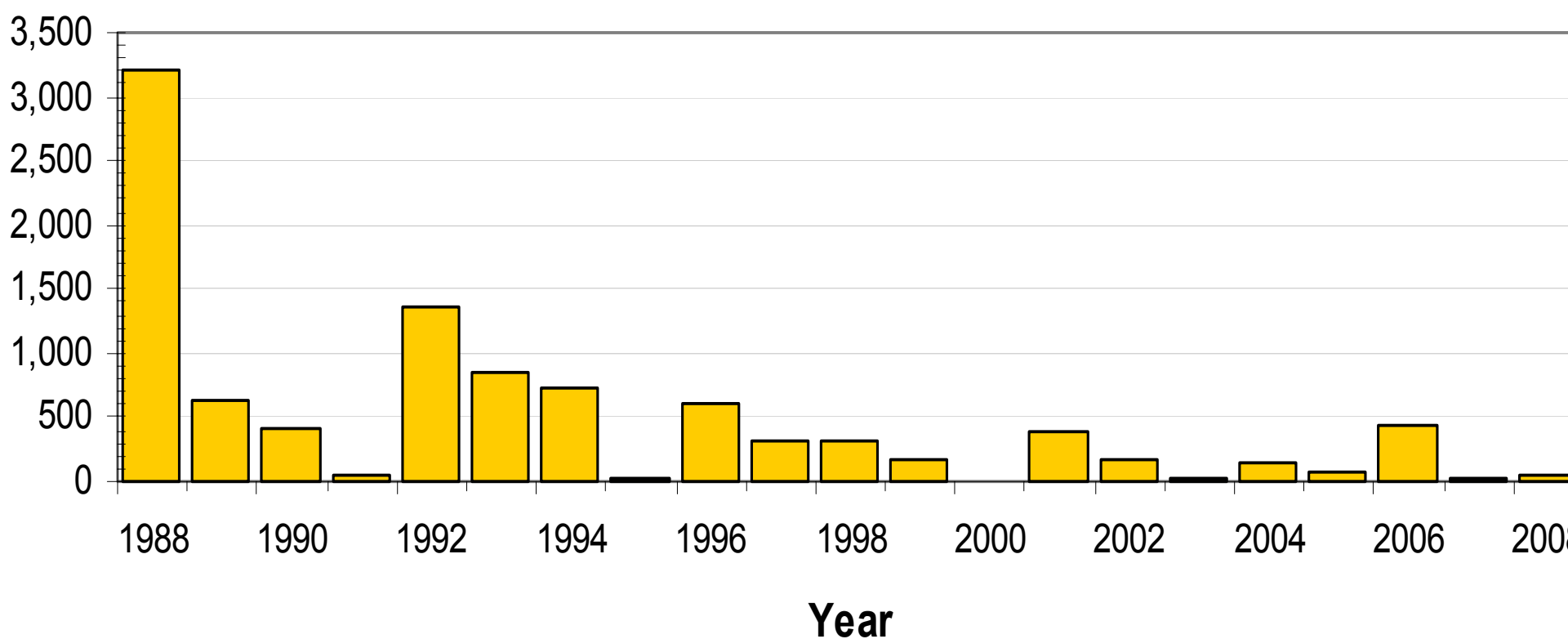
Phosphamidon – 10,200 pounds

Pounds of Phosphamidon Collected per Year



Aldrin – 9,995 pounds

Pounds of Aldrin Collected per Year





LD 50 = 0.22

8 OZ. NET

No. 92993

DANGER!
KEEP OUT OF
REACH OF
CHILDREN



Not For Resale
For use only by
county, state, or
local officers or
employees and licensed
or recognized
natural pest control
operators in
further preparation
of rodenticides
their own use.

Compound 1080
REG. U. S. PAT. OFF.

Technical
SODIUM MONOFLUOROACETATE

FATAL POISON

ANTIDOTE

Internal—Speed is essential. Immediately give a tablespoon of oil
in a glass of warm water and repeat until vomit fluid is clear.
Then give two tablespoonfuls of Epsom Salts in water. Have victim
lie down and keep warm and quiet. Call A Physician Immediately.

Manufactured by Tull Chemical Co., Inc.
Oxford, Alabama, U. S. A.

LD 50 = 1.2



TEPP 40 WM

WATER MISCIBLE
ORGANOPHOSPHORUS INSECTICIDE

ACTIVE INGREDIENTS:
Tetraethyl pyrophosphate 40%
Other ethyl phosphates 60%



**POISON
DANGER**

Keep Out of Reach of Children

**EXTREMELY POISONOUS LIQUID.
RAPIDLY ABSORBED THROUGH SKIN AND EYES.
POISONOUS IF SWALLOWED, INHALED OR ABSORBED THROUGH
THE SKIN, EYES, OR THROUGH CONTAMINATED CLOTHING.
(See left panel for additional precautions, SYMPTOMS, FIRST AID
TREATMENT and Information for Physician.**

Protect from temperatures below 32° F.

STAUFFER CHEMICAL COMPANY
NEW YORK
1 GALLON NET



Zinc
Phosphide
Keg - 80%
Active



RESTRICTED USE PESTICIDE
DUE TO ACUTE INHALATION TOXICITY
OF HIGHLY TOXIC PHOSPHINE GAS

For retail sale to and use only by Certified Applicators for those uses covered by the applicator's certification or persons trained in accordance with the attached product label working under the direct supervision and in the physical presence of the Certified Applicator. Physical presence means on site or on the premises. Refer to Pesticide System's Applicator's Manual for complete instructions for the safe use of this product.

Fumitoxin
PELLETS

FOR USE AGAINST LISTED INSECTS WHICH INFEST STORED COMMODITIES, SPECIFIED PROCESSED FOODS, AND ANIMAL FEEDS.

ACTIVE INGREDIENT - ALUMINUM PHOSPHIDE
INERT INGREDIENTS

**KEEP OUT OF REACH OF CHILDREN
DANGER/PELIGRO - POISON**

PRECAUCION AL USUARIO: Si usted no lee ingles, no use este producto hasta que elo haya sido traducido ampliamente.
Treatment of Practical Treatment: Symptoms of overexposure are headache, dizziness, nausea, difficulty breathing, vomiting, and diarrhea. In all cases of overexposure get medical attention immediately. Take victim to a doctor or emergency treatment facility.
If excessive amounts of gas from aluminum phosphide are inhaled: Get exposed person to fresh air. Keep warm and make sure person can breathe freely. If breathing has stopped, give artificial respiration. Do not give anything by mouth to an unconscious person.
If aluminum phosphide pellets, or powder are swallowed: Drink or administer one glass of water and induce vomiting by touching back of throat with finger, or if a vomit syrup is present. Do not give anything by mouth if victim is unconscious or if powder or granules of aluminum phosphide get on skin or clothing: Brush or shake off clothes in a well ventilated area. Check that all pockets and cuffs are empty. Allow to breathe in a ventilated area prior to laundering. Do not leave contaminated clothing and/or confined areas, such as automobiles, vans, motel rooms, or other enclosed areas, thoroughly with soap and water.
If dust from pellets gets in eyes: Flush with plenty of water. Get medical attention immediately for additional precautionary statements.

Manufactured for:
PESTCON SYSTEMS, INC.

8711 CAPITAL CENTER DRIVE, STE. 302
SALEIGH, N.C. 27596-5565
Content: approx. 2.490 pellets
Net Weight: 1.5 kilos

TELEPHONE (919)
EPA REG. NO. 48
EPA EST. NO. 48

Larvacide
CHLORPICRIN

THE SAFER FUMIGANT
for
INSECT and RODENT CONTROL
and SOIL FUMIGATION

SAFER BECAUSE OF INSEPARABLE TEAR GAS WARNING
WILL NOT BURN OR EXPLODE - PENETRATING
EASY TO APPLY

WARNING POISON
DO NOT BREATHE FUMES



ANTIDOTE
CALL A DOCTOR IN CASE OF
Skin contact. Remove clothes and wash with soap and water. If inhaled, get to open air, and keep warm and give artificial respiration if necessary. If swallowed, give warm water and warmth until effects wear off. If stopped, give artificial respiration.
Eyes: Irrigate eyes with water to remove powder.

THIS CAN HOLDS GLASS DISPENSER BOTTLE
CONTAINING LIQUID LARVACIDE. REMOVE TOP
OF CAN WITH ORDINARY OPENER. TAKE EVERY
PRECAUTION AGAINST BOTTLE BREAKAGE
REMOVE TOP OF CAN ONLY IN OPEN AIR
CONTENTS ONE POUND

ACTIVE INGREDIENT: CHLORPICRIN OVER 95%
INERT INGREDIENTS: LESS THAN 5%

Manufactured for
LARVACIDE PRODUCTS, Inc.
117 LIBERTY STREET
NEW YORK 6, NEW YORK

RESTRICTED USE PESTICIDE DUE TO ACUTE TOXICITY
To be used and used only by certified applicators or persons under their direct supervision
only for those uses covered by the certified applicator's certification.

BROM-O-GAS

SOIL AND SPACE
FUMIGANT

ACTIVE INGREDIENTS:
Methyl bromide.....98%
INERT INGREDIENTS:
Chloropicrin.....2%
100%

**DANGER
PELIGRO**

**KEEP OUT OF REACH
OF CHILDREN
POISON**

EPA Reg. No. 578

PRECAUCION AL USUARIO: Si usted no lee ingles, no use este producto hasta que la etiqueta haya sido traducida ampliamente.

STATEMENT OF PRACTICAL TREATMENT

In all cases of overexposure, get medical attention immediately. Take person to a doctor or emergency treatment facility.
Remove exposed person from contaminated area. Keep warm. Make sure person can breathe freely. If breathing has stopped, apply artificial respiration. Do not give anything by mouth to an unconscious person. If not unconscious, rinse mouth out with water.
Immediately remove contaminated clothing, shoes, and any other item on skin and wash contaminated skin area thoroughly with soap and water.
Hold eyelids open and flush with a steady, gentle stream of water for at least 15 minutes.

SEE BACK PANEL FOR ADDITIONAL PRECAUTIONARY STATEMENTS

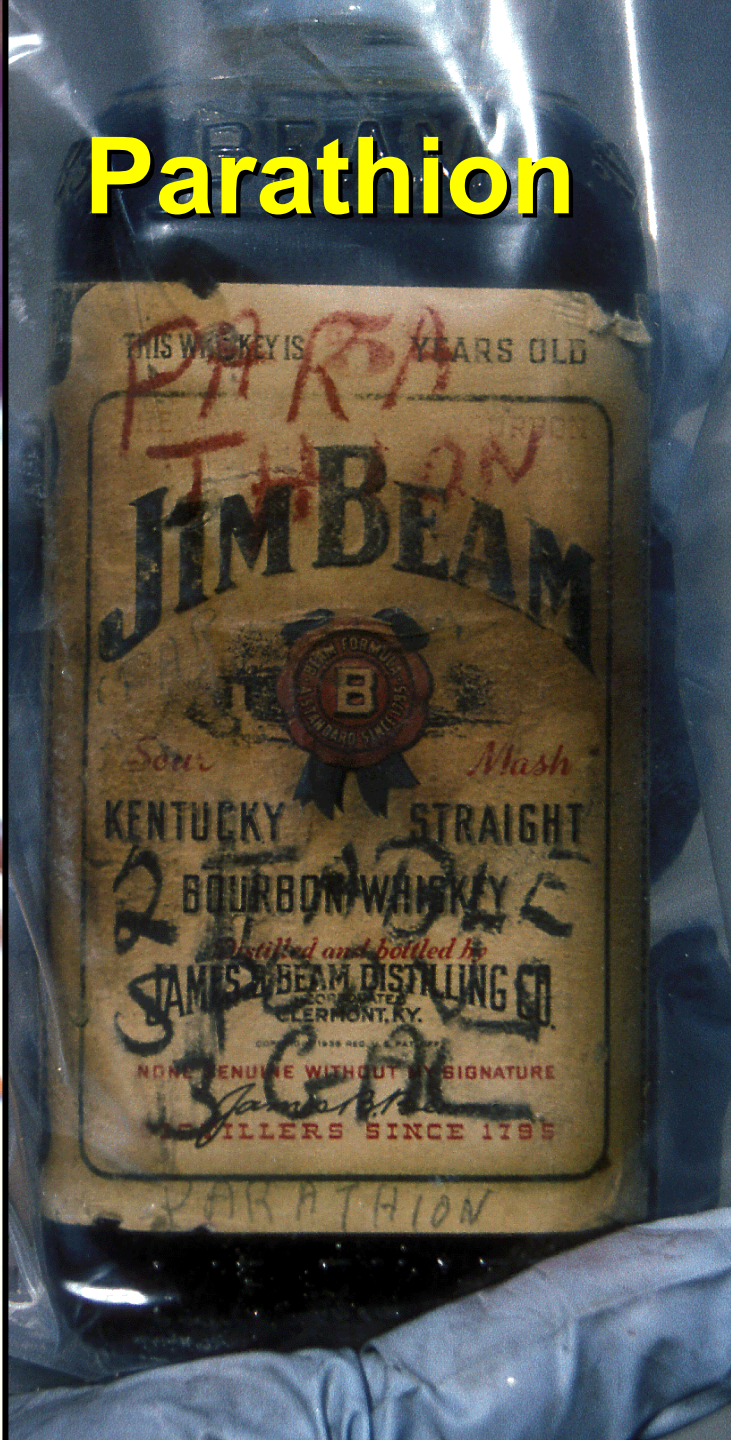


Great Lakes
Chemical Corporation

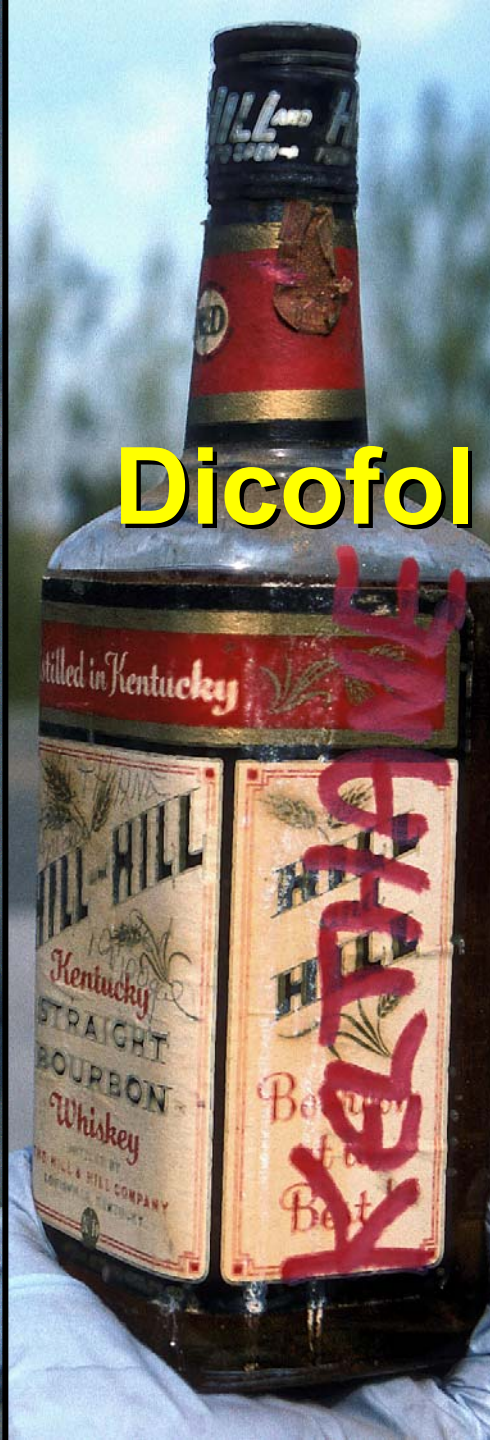
West Lafayette, Indiana



DDT



Parathion



Dicofol

Joe Hoffman

WSDA Waste Pesticide Collection Program

PO Box 42589

Olympia, WA 98504-2589

360-902-2048 360-902-2093 (FAX)

jhoffman@agr.wa.gov



Washington State

Department of Agriculture

Waste Pesticide Program



**“Excessive
Inhalation”?**

CONTENTS

6 LBS. NET

AERO Cyanate
TRADE MARK
WEEDKILLER

GUARANTEED ANALYSIS

ACTIVE INGREDIENT — POTASSIUM CYANATE 91%
INERT INGREDIENTS 9%

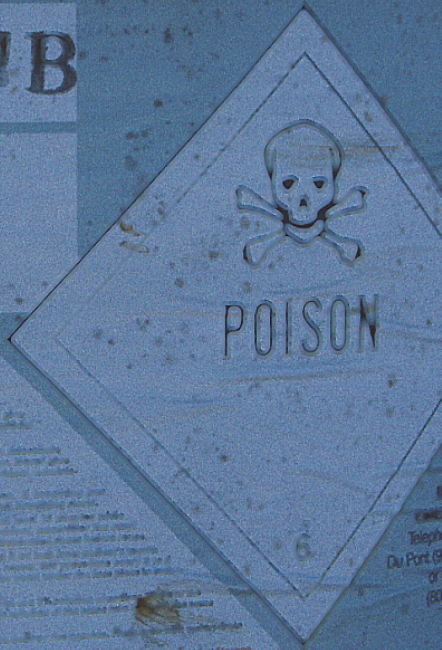
CAUTION: AVOID EXCESSIVE INHALATION
DO NOT STORE NEAR WATER, ACIDS OR CHEMICALS
AVOID EXCESSIVE OR PROLONGED SKIN CONTACT
CONTENTS MUST BE KEPT IN A TIGHTLY
CLOSED, AIR-TIGHT CONTAINER



LOT M 90524 B

CYANOBRILK

REG. U.S. PAT. OFF.



DANGER!

POISON
Call a physician.

Do not breathe dust or gas.
Do not get in eyes, on skin, or clothing.
Keep dry.
Keep container closed and away from acids.
Wash in a dry, well-ventilated place.
Keep away from food and foodstuffs.
Wash thoroughly after handling.

DO NOT REUSE THIS CONTAINER. Follow drum disposal instructions given in the Du Pont Sodium Cyanide Product, Use, Storage and Handling Instructions.

NOT FOR USE AS A PESTICIDE

©-191 11-82
MADE IN U.S.A.



g property.



CAUTION — After spreading wash hands, thoroughly removing all traces of the bait.

Formaldehyde

GW FORMALDEHYDE

DANGER
CAUSES BURN
AVOID BREATHING
AVOID CONTACT WITH SKIN AND EYES.
IMMEDIATELY FLUSH SKIN OR EYES WITH
AT LEAST 15 MINUTES. FOR EYES GET MEDICAL
FOR MANUFACTURING PURPOSES ONLY
A DRUG.

POISON
KEEP OUT OF REACH OF CHILDREN

CONTAINER HANDLING & STORAGE

1. KEEP CONTAINER CLOSED WHEN NOT IN USE.
2. KEEP AWAY FROM HEAT AND OPEN FLAME.
3. DO NOT USE PRESSURE TO EMPTY.
4. BEFORE CLOSURE
5. LOOSEN

GREAT WESTERN CHEMICAL CO.
EUGENE, OREGON
PORTLAND, OREGON
RICHMOND, CALIF.

Arsenical

Antrol

ANT SYRUP

KILLS SWEET AND CERTAIN GREASE EATING ANTS

DANGER - POISON
KEEP OUT OF REACH OF CHILDREN AND PETS.
SEE ANTIDOTE ON BACK PANEL BEFORE USE.

NET 4 FL. OZ.

restone

Carbon Tetrachloride

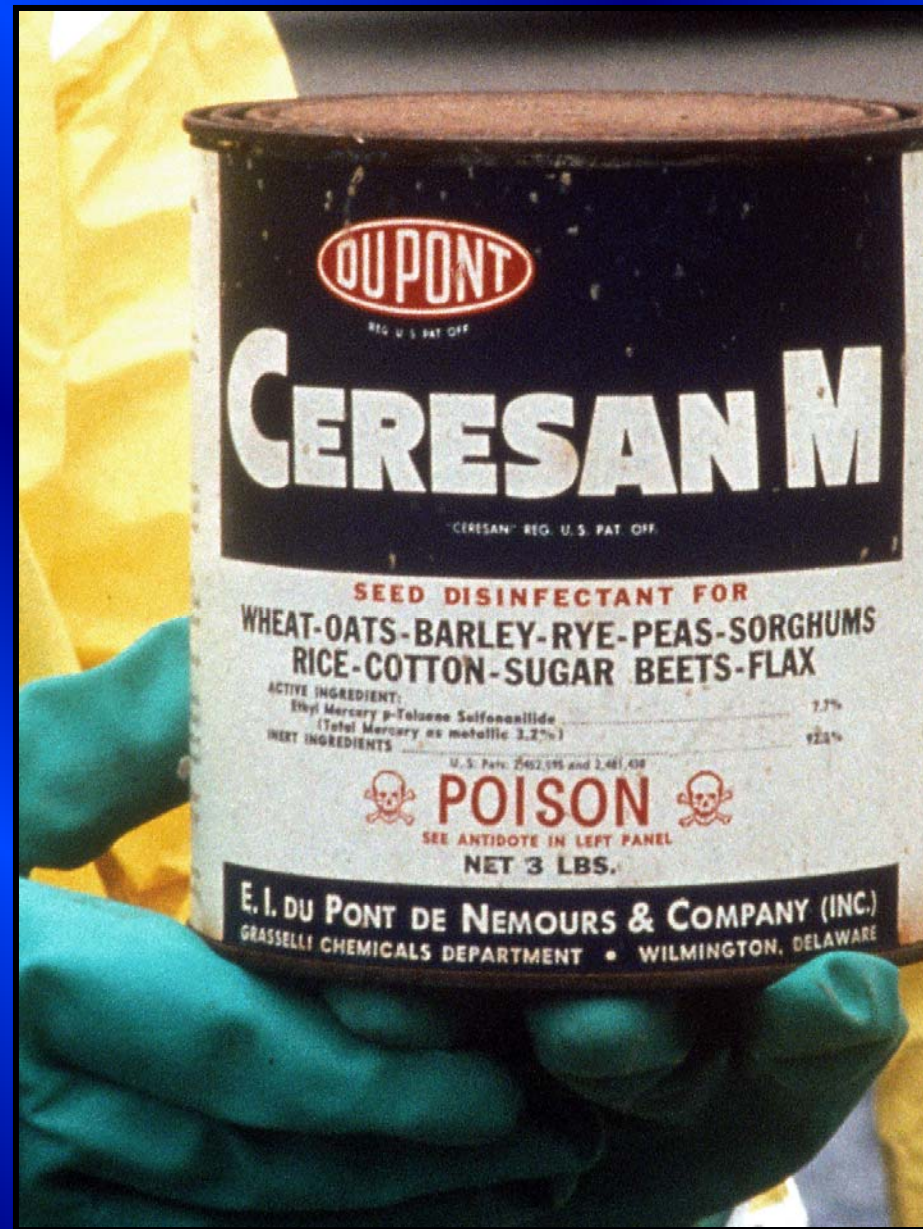


FIRE EXTINGUISHER FLUID

CARBON TETRACHLORIDE. DANGER! HAZARDOUS LIQUID. MAY BE FATAL IF INHALED OR SWALLOWED. DO NOT TAKE INTERNALLY; DO NOT BREATHE VAPOR. USE WITH ADEQUATE VENTILATION. AVOID PROLONGED CONTACT WITH SKIN.

WITH U.S. GOVT. SPEC. OF-380

Organo - Mercury



IBK

WOODY PLANT HERBICIDE

Contains the Butoxyethanol Ester of 2,4,5-T and 2,4-D. Controls Woody Plants on utility rights-of-way and along highways.

CAUTION: Keep out of reach of children. See other cautions on right side panel.

ACTIVE INGREDIENTS:
*2,4,5-Trichlorophenoxyacetic acid, butoxyethanol ester 29.9%
**2,4-Dichlorophenoxyacetic acid, butoxyethanol ester 31.2%
INERT INGREDIENTS: 38.9%

*2,4,5-Trichlorophenoxyacetic acid equivalent 21.5% by weight or 2 pounds per gallon.
**2,4-Dichlorophenoxyacetic acid equivalent 21.5% by weight or 2 pounds per gallon.



Bartel's
REDYCOAT

PENTA CONCENTRATE

19 to 1 Concentrated Wood Preservative

453

ACTIVE INGREDIENTS:
Pentachlorophenol 14.4%
Other Chlorophenols, related compound 4.1%
INERT INGREDIENTS 18.5%
Contains 46% of Technical Pentachlorophenol (as defined in Federal Specification TT-9-573)

Warning: Flammable

See side panel for additional cautions.
KEEP OUT OF REACH OF CHILDREN

NET 128 FL. OZ. (1 GALL)



GILSONITE, INC., PORTLAND, OREGON 97211

SHERWIN - WILLIAMS

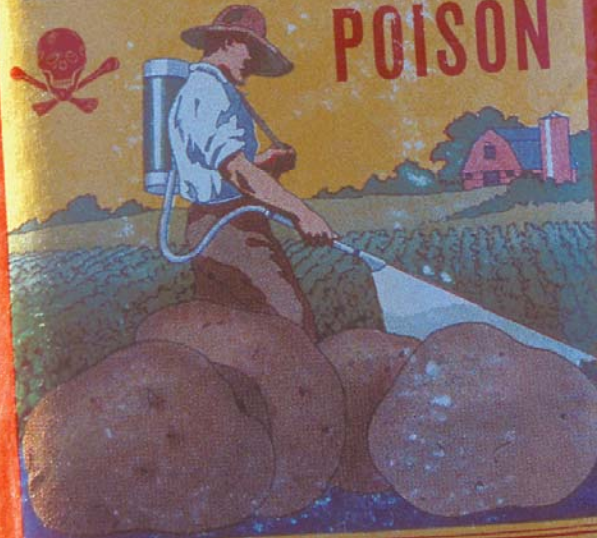


INSECTICIDES

ONE POUND **ARSENATE OF CALCIUM** NET WEIGHT

CONTAINING OTHER CALCIUM COMPOUNDS

POISON



Amounts of Specific Pesticides Collected by Year

