



***PESTICIDE  
CONTAINER  
RECYCLING***  
**TPSA CONFERENCE**  
**February 14, 2011**

[www.interstateagplastics.com](http://www.interstateagplastics.com)

**Brad Bittleston, Owner**  
**Interstate Ag Plastics**  
**Contractor For**  
***Ag Container Recycling Council***



# Who we are?

Vince Crop  
Dusters

4-B Farms

Interstate  
Ag Plastics





# INTERSTATE AG PLASTICS' HEADQUARTERS





# The basics of our recycling program

- We adhere strictly to all ANSI/ASABE S-596 Standards
- Service approximately 300 private collection sites and 34 public site
- Promotions of the ACRC program



# Source of Material

- The majority of containers recycled, come from aerial applicators, ground applicators and farmers.
- 
- In numerous counties, we work with the local Ag Commissioners and Waste Management programs that offer recycling days.



# Mobile Granulation Equipment











# NOW THAT A PILE!!

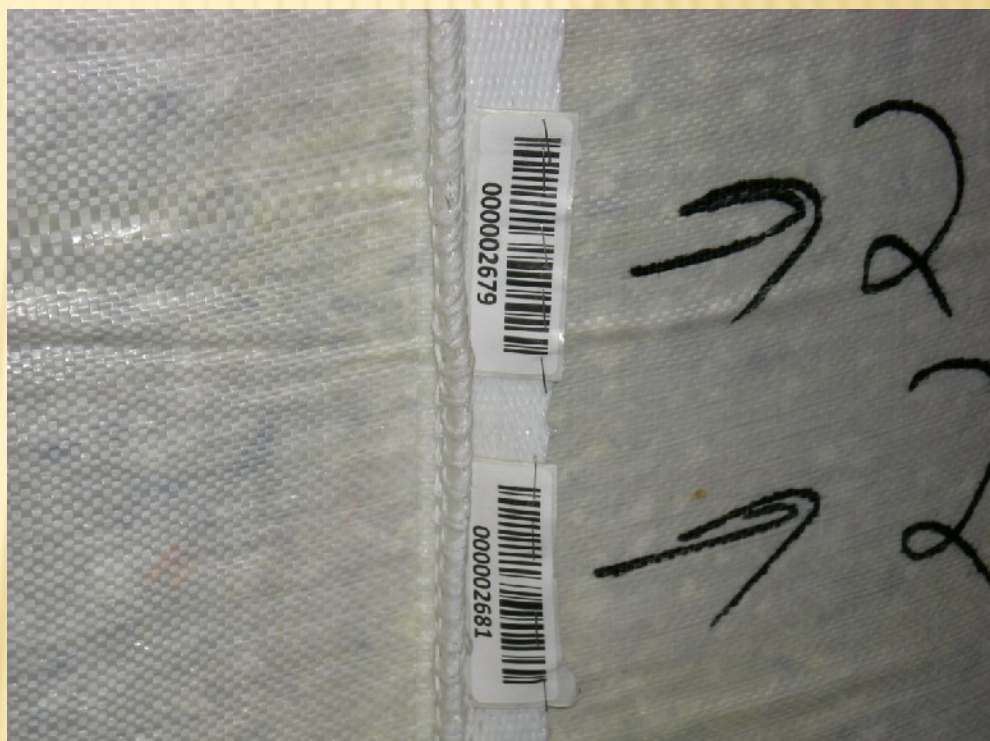








# BAG BAR CODE LABELS



RecyclerPRO

File Customers Bags End User Pooler Umbrella Company Tools Data Exchange Reports Invoicing Help



Manual

Internet

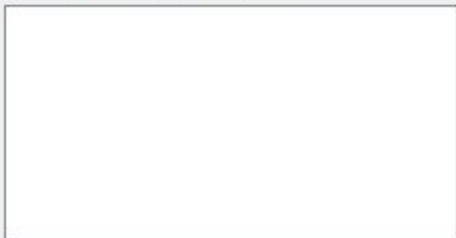
Passive Mode

Transfer Path

C:\RecyclerPRO\source\Transfer

Select Drive/Folder

Files Available for Import



Check for Files

Download Files

Import Files

Import Bags from RecyclerPRO Mobile Trucker

? Help

RecyclerPRO

File Customers Bags End User Pooler Umbrella Company Tools Data Exchange Reports Invoicing Help



Filtering

Customer All Customers

### Bags in Warehouse

| Pickup Date      | Customer                | Trucker     | Weight | Type | Bar Code | Visible ID | Size Type |
|------------------|-------------------------|-------------|--------|------|----------|------------|-----------|
| 10/14/2010 1:... | Blair Crop Service      | Ben Mejia   | 0      | Jug  | 3493     | 000003493  | Full      |
| 10/28/2010 3:... | Blair Ground Service    | Ben Mejia   | 0      | Jug  | 3501     | 000003501  | Half      |
| 12/2/2010 1:...  | Thiel Air Care (chow... | Ramon Lopez | 0      | Drum | 2930     | 000002930  | Quarter   |
| 12/2/2010 1:...  | Thiel Air Care (chow... | Ramon Lopez | 0      | Pail | 2931     | 000002931  | Quarter   |
| 1/7/2011 3:4:... | RH Phillips             | Ramon Lopez | 0      | Drum | 3632     | 000003632  | Quarter   |
| 1/11/2011 8:...  | Mark Corria Ag Servi... | Ben Mejia   | 0      | Pail | 3657     | 000003657  | Quarter   |
| 1/11/2011 8:...  | Mark Corria Ag Servi... | Ben Mejia   | 0      | Pail | 3658     | 000003658  | Quarter   |
| 1/11/2011 8:...  | Gilbert Aviation        | Ben Mejia   | 0      | Pail | 3662     | 000003662  | 3 Quarter |
| 1/11/2011 8:...  | Jones Flying Service    | Ramon Lopez | 0      | Jug  | 3633     | 000003633  | Full      |
| 1/11/2011 8:...  | Jones Flying Service    | Ramon Lopez | 0      | Jug  | 3634     | 000003634  | Quarter   |
| 1/12/2011 8:...  | Sutter Home Winery      | Ramon Lopez | 0      | Jug  | 3635     | 000003635  | 3 Quarter |
| 1/12/2011 8:...  | Sutter Home Winery      | Ramon Lopez | 0      | Jug  | 3636     | 000003636  | Quarter   |
| 1/12/2011 8:...  | Sutter Home Winery      | Ramon Lopez | 0      | Drum | 3637     | 000003637  | Quarter   |
| 1/13/2011 2:...  | Mid-Cal Ag, Inc.        | Ben Mejia   | 0      | Jug  | 3663     | 000003663  | Full      |
| 1/13/2011 2:...  | Mid-Cal Ag, Inc.        | Ben Mejia   | 0      | Jug  | 3664     | 000003664  | Full      |
| 1/13/2011 2:...  | Mid-Cal Ag, Inc.        | Ben Mejia   | 0      | Jug  | 3665     | 000003665  | Full      |
| 1/13/2011 2:...  | Mid-Cal Ag, Inc.        | Ben Mejia   | 0      | Jug  | 3666     | 000003666  | Full      |
| 1/13/2011 2:...  | Mid-Cal Ag, Inc.        | Ben Mejia   | 0      | Pail | 3667     | 000003667  | Half      |
| 1/13/2011 2:...  | Mid-Cal Ag, Inc.        | Ben Mejia   | 0      | Jug  | 3668     | 000003668  | Half      |
| 1/13/2011 2:...  | Mid-Cal Ag, Inc.        | Ben Mejia   | 0      | Drum | 3669     | 000003669  | Quarter   |

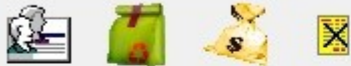
Add New Bag

Edit Bag

Delete Bag

Assign Weight to Selected Bags

? Help



### Granulation Report

Report Title

Certificate Name

Contractor Name

Operator

Choose Umbrella Company

Umbrella

Report Type

General

Begin Date

End Date

Truckload Transaction

End User

Transaction Date

Report Output

- Preview
- Printer
- Text File
- CSV File (Comma Delimited)

Save Report

Print Report

**Certificate: Granulation report**  
**Contractor: Brad Bittleston**  
**Operator:**

| Bar Code | State   | Customer                   | Date Gr.  | Est. Wgt | County | Cont. |
|----------|---------|----------------------------|-----------|----------|--------|-------|
| 3621     | Califor | Agriland                   | 1/ 3/2011 | 2060     | Madera | Jug   |
| 2934     | Califor | Agriland                   | 12/28/201 | 2060     | Madera | Jug   |
| 3620     | Califor | Agriland                   | 1/ 3/2011 | 2060     | Madera | Jug   |
| 3622     | Califor | Agriland                   | 1/ 4/2011 | 2060     | Madera | Jug   |
| 2936     | Califor | Agriland                   | 12/29/201 | 2060     | Madera | Jug   |
| 2937     | Califor | Agriland                   | 12/29/201 | 2060     | Madera | Jug   |
| 2938     | Califor | Agriland                   | 12/30/201 | 2060     | Madera | Jug   |
| 2935     | Califor | Agriland                   | 12/29/201 | 2060     | Madera | Jug   |
| 3659     | Califor | Gilbert Aviation           | 1/11/2011 | 2060     | Fresno | Jug   |
| 3660     | Califor | Gilbert Aviation           | 1/11/2011 | 2060     | Fresno | Jug   |
| 3661     | Califor | Gilbert Aviation           | 1/11/2011 | 2060     | Fresno | Jug   |
| 3628     | Califor | Growers Air Service        | 1/ 6/2011 | 2060     | Yolo   | Drum  |
| 3626     | Califor | Growers Air Service        | 1/ 6/2011 | 2060     | Yolo   | Jug   |
| 3629     | Califor | Growers Air Service        | 1/ 7/2011 | 2060     | Yolo   | Drum  |
| 3630     | Califor | Growers Air Service        | 1/ 7/2011 | 2060     | Yolo   | Drum  |
| 3627     | Califor | Growers Air Service        | 1/ 6/2011 | 1030     | Yolo   | Jug   |
| 3625     | Califor | Growers Air Service        | 1/ 6/2011 | 2060     | Yolo   | Jug   |
| 3623     | Califor | Growers Air Service        | 1/ 5/2011 | 2060     | Yolo   | Jug   |
| 3624     | Califor | Growers Air Service        | 1/ 5/2011 | 2060     | Yolo   | Jug   |
| 3655     | Califor | Mark Corria Ag Service inc | 1/11/2011 | 2060     | Tulare | Jug   |
| 3656     | Califor | Mark Corria Ag Service inc | 1/11/2011 | 2060     | Tulare | Jug   |
| 3654     | Califor | Mark Corria Ag Service inc | 1/ 4/2011 | 2060     | Tulare | Jug   |
| 3631     | Califor | RH Phillips                | 1/ 7/2011 | 1030     | Yolo   | Jug   |

## TOTALS

| Total Wgt | Bags Sold | Bags on Hand | Jugs  | Pails | Drums | Other |
|-----------|-----------|--------------|-------|-------|-------|-------|
| 45320     | 22 00     | 0 00         | 19 00 | 0 00  | 3 00  | 0 00  |



RecyclerPRO

File Customers Bags End User Pooler Umbrella Company Tools Data Exchange Reports Invoicing Help

Truckload Transactions

| End User | Date       |
|----------|------------|
|          | 1/11/2011  |
|          | 12/30/2... |
|          | 12/16/2... |
|          | 12/10/2... |
|          | 12/3/2010  |
|          | 11/30/2... |
|          | 11/16/2... |
|          | 11/5/2010  |
|          | 11/2/2010  |
|          | 10/28/2... |
|          | 10/13/2... |
|          | 9/30/2010  |
|          | 9/29/2010  |
|          | 9/17/2010  |
|          | 8/31/2010  |
|          | 8/30/2010  |
|          | 8/25/2010  |
|          | 8/20/2010  |
|          | 8/10/2010  |
|          | 7/26/2010  |
|          | 7/13/2010  |
|          | 7/7/2010   |

End User: Wisconsin Plastic Drain 1

Date: 1/11/2011

**Add Bag(s) to Truckload Transaction**

Gross Weight of all Bags: 45320.00

Date of Gross Weight: 1/11/2011

Sold Price: 0.00

Print End User Shipping Certificate

Print Processor Shipping Certificate

Print Product Manufacturing Form

Bags in Truckload Transaction

| P/U Date   | Customer            | Bar Code |
|------------|---------------------|----------|
| 12/28/2010 | Agriland            | 2934     |
| 12/29/2010 | Agriland            | 2935     |
| 12/29/2010 | Agriland            | 2936     |
| 12/29/2010 | Agriland            | 2937     |
| 12/30/2010 | Agriland            | 2938     |
| 1/ 3/2011  | Agriland            | 3620     |
| 1/ 3/2011  | Agriland            | 3621     |
| 1/ 4/2011  | Agriland            | 3622     |
| 1/ 4/2011  | Mark Corria Ag S... | 3654     |
| 1/ 5/2011  | Growers Air Ser...  | 3623     |
| 1/ 5/2011  | Growers Air Ser...  | 3624     |
| 1/ 6/2011  | Growers Air Ser...  | 3625     |
| 1/ 6/2011  | Growers Air Ser...  | 3626     |
| 1/ 6/2011  | Growers Air Ser...  | 3627     |
| 1/ 6/2011  | Growers Air Ser...  | 3628     |
| 1/ 7/2011  | Growers Air Ser...  | 3629     |
| 1/ 7/2011  | Growers Air Ser...  | 3630     |
| 1/ 7/2011  | RH Phillips         | 3631     |
| 1/11/2011  | Gilbert Aviation    | 3659     |
| 1/11/2011  | Gilbert Aviation    | 3660     |
| 1/11/2011  | Gilbert Aviation    | 3661     |
| 1/11/2011  | Mark Corria Ag S... | 3655     |

New Transaction Edit Transaction **Save Transaction** **Undo Changes** Delete Transaction ? Help



# COLLECTION DATA

- ✘ IAG travel approximately 1300 miles/week
- ✘ IAG uses approximately 1200 gallons of Diesel fuel per/month
- ✘ IAG average work hours per week = 180 man Hr
- ✘ ----- 60 hours work week/person
- ✘ Interstate Ag Plastics can process up to 40,000 lbs. of Crop Protection Containers per week and during peak spraying periods we could go as high as 50,000 lbs/week (July, August, September, October)



# THE CHALLENGES GOING FORWARD

- ✘ Increase of unforeseen costs; e.g. diesel/Regulations
- ✘ Limited outlets for recovered plastic
- ✘ Need to increase service to pesticide users



**THANK YOU!!**

**Brad Bittleston**

**P.O. Box 265**

**Buttonwillow, CA 93206**

**[www.interstateagplastics.com](http://www.interstateagplastics.com)**

**661-764-9614**